

Datasheet for ABIN931031
anti-Cyclin B2 antibody



[Go to Product page](#)

1 Image

Overview

| | |
|--------------|--|
| Quantity: | 50 µg |
| Target: | Cyclin B2 (CCNB2) |
| Reactivity: | Human |
| Host: | Mouse |
| Clonality: | Monoclonal |
| Conjugate: | This Cyclin B2 antibody is un-conjugated |
| Application: | Dot Blot (DB) |

Product Details

| | |
|-----------------------------|--|
| Immunogen: | CCNB2 antibody was raised in mouse using recombinant Human Cyclin B2 (Ccnb2) |
| Clone: | 2115C1 |
| Isotype: | IgG1 |
| Cross-Reactivity: | Human |
| Cross-Reactivity (Details): | Other species not studied. |
| Purification: | Protein G affinity chromatography |

Target Details

| | |
|-------------------|---|
| Target: | Cyclin B2 (CCNB2) |
| Alternative Name: | CCNB2 (CCNB2 Products) |
| Background: | Cyclin B2 is a member of the cyclin family, specifically the B-type cyclins. The B-type cyclins, B1 |

Target Details

and B2, associate with p34cdc2 and are essential components of the cell cycle regulatory machinery. B1 and B2 differ in their subcellular localization. Cyclin B1 co-localizes with microtubules, whereas cyclin B2 is primarily associated with the Golgi region. Cyclin B2 also binds to transforming growth factor beta RII and thus cyclin B2/cdc2 may play a key role in transforming growth factor beta-mediated cell cycle control. Synonyms: Monoclonal CCNB2 antibody, Anti-CCNB2 antibody, cyclin B2 antibody, HsT17299 antibody.

Pathways: [Cell Division Cycle, M Phase](#)

Application Details

Application Notes: Optimal conditions should be determined by the investigator.

Restrictions: For Research Use only

Handling

Concentration: Lot specific

Buffer: CCNB2 antibody in PBS (3.0 mM KCl, 1.5 mM KH₂ PO₄, 140 mM NaCl, 8.0 mM Na₂ HPO₄ (pH 7.4)) containing 1 % bovine serum albumin (BSA) and 0.05 % sodium azide (NaN₃).

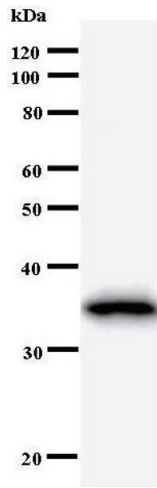
Preservative: Sodium azide

Precaution of Use: This product contains Sodium Azide: a POISONOUS AND HAZARDOUS SUBSTANCE, which should be handled by trained staff only.

Handling Advice: Avoid repeated freeze/thaw cycles.
Dilute only prior to immediate use.

Storage: 4 °C/-20 °C

Storage Comment: Store at 2-8 °C for up to one year. We recommend long term storage at -20 °C.



Western Blotting

Image 1.