

Datasheet for ABIN931054

anti-KIF2C antibody**3** Images[Go to Product page](#)

Overview

Quantity:	100 µg
Target:	KIF2C
Reactivity:	Human
Host:	Mouse
Clonality:	Monoclonal
Conjugate:	This KIF2C antibody is un-conjugated
Application:	Western Blotting (WB), Immunocytochemistry (ICC), Flow Cytometry (FACS), Dot Blot (DB)

Product Details

Immunogen:	KIF2 C antibody was raised in mouse using recombinant Human Kinesin Family Member 2 (Kif2)
Clone:	2488C3a
Isotype:	IgG1
Cross-Reactivity:	Human
Cross-Reactivity (Details):	Other species not studied.
Purification:	Protein G affinity chromatography

Target Details

Target:	KIF2C
Alternative Name:	KIF2C (KIF2C Products)

Target Details

Background: The protein encoded by this gene is a member of kinesin-like protein family. Proteins of this family are microtubule-dependent molecular motors that transport organelles within cells and move chromosomes during cell division. This protein is important for anaphase chromosome segregation and may be required to coordinate the onset of sister centromere separation.

Synonyms: Monoclonal KIF2C antibody, Anti-KIF2C antibody, Kinesin family member 2C antibody, MCAK antibody, KNSL6 antibody.

Pathways: [Microtubule Dynamics](#)

Application Details

Application Notes: WB: 0.2-2 µg/mL, FC: 0.5-2 µg/sample, ICC: 2-100 µg/mL
Optimal conditions should be determined by the investigator.

Restrictions: For Research Use only

Handling

Concentration: Lot specific

Buffer: KIF2 C antibody in PBS (3.0 mM KCl, 1.5 mM KH₂ PO₄, 140 mM NaCl, 8.0 mM Na₂ HPO₄ (pH 7.4)) containing 1 % bovine serum albumin (BSA) and 0.05 % sodium azide (NaN₃).

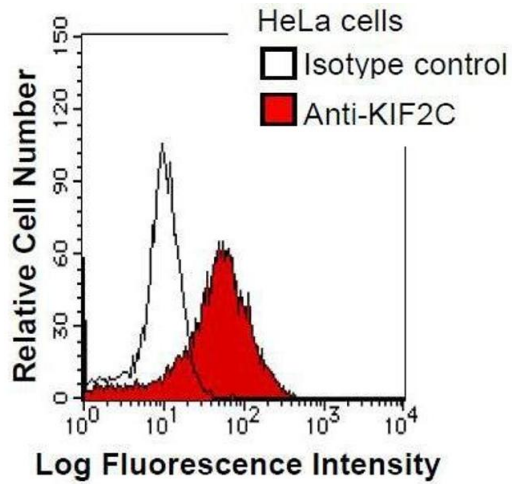
Preservative: Sodium azide

Precaution of Use: This product contains Sodium Azide: a POISONOUS AND HAZARDOUS SUBSTANCE, which should be handled by trained staff only.

Handling Advice: Avoid repeated freeze/thaw cycles.
Dilute only prior to immediate use.

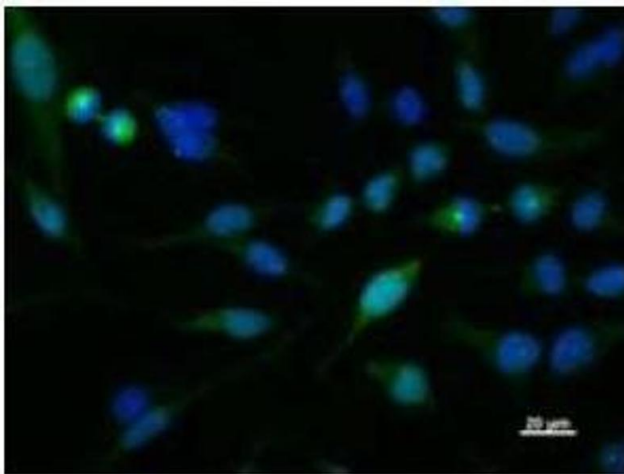
Storage: 4 °C/-20 °C

Storage Comment: Store at 2-8 °C for up to one year. We recommend long term storage at -20 °C.



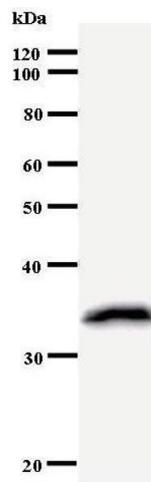
Flow Cytometry

Image 1. HeLa cells were fixed in 2% paraformaldehyde/PBS and then permeabilized in 90% methanol. Cells were stained with anti-KIF2C antibody (shaded) or isotype control (unshaded) followed by Alexa Fluor 488 conjugated goat anti-mouse IgG.



Immunofluorescence

Image 2. Immunostaining analysis in HeLa cells. HeLa cells were fixed with 4% paraformaldehyde and permeabilized with 0.01% Triton-X100 in PBS. The cells were immunostained with anti-KIF2C antibody. Nuclear was stained with Hoechst (blue fluorescence).



Western Blotting

Image 3.