

Datasheet for ABIN931060
anti-GTF2A1 antibody



[Go to Product page](#)

1 Image

Overview

Quantity:	100 µg
Target:	GTF2A1
Reactivity:	Human
Host:	Mouse
Clonality:	Monoclonal
Conjugate:	This GTF2A1 antibody is un-conjugated
Application:	Dot Blot (DB)

Product Details

Immunogen:	GTF2 A1 antibody was raised in mouse using recombinant Human General Transcription Factor lia, 1, 19/32 da (Gtf2 1)
Clone:	708C4a
Isotype:	IgG1
Cross-Reactivity:	Human
Cross-Reactivity (Details):	Other species not studied.
Purification:	Protein G affinity chromatography

Target Details

Target:	GTF2A1
Alternative Name:	GTF2A1 (GTF2A1 Products)

Target Details

Background: Accurate transcription initiation on TATA-containing class II genes involves the ordered assembly of RNA polymerase II and several general initiation factors. One of these factors is TFIIA, which when purified from HeLa extracts consists of 35-, 19-, and 12 kDa subunits. Synonyms: Monoclonal GTF2A1 antibody, Anti-GTF2A1 antibody, General transcription factor IIA antibody, TF2A1 antibody, TFIIA antibody, MGC129969 antibody, MGC129970 antibody.

Application Details

Application Notes: Optimal conditions should be determined by the investigator.

Restrictions: For Research Use only

Handling

Concentration: Lot specific

Buffer: GTF2 A1 antibody in PBS (3.0 mM KCl, 1.5 mM KH₂ PO₄, 140 mM NaCl, 8.0 mM Na₂ HPO₄ (pH 7.4)) containing 1 % bovine serum albumin (BSA) and 0.05 % sodium azide (NaN₃).

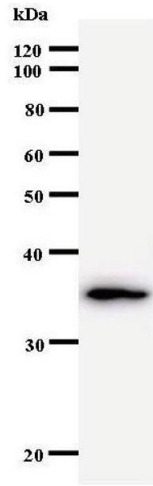
Preservative: Sodium azide

Precaution of Use: This product contains Sodium Azide: a POISONOUS AND HAZARDOUS SUBSTANCE, which should be handled by trained staff only.

Handling Advice: Avoid repeated freeze/thaw cycles.
Dilute only prior to immediate use.

Storage: 4 °C/-20 °C

Storage Comment: Store at 2-8 °C for up to one year. We recommend long term storage at -20 °C.



Western Blotting

Image 1.