

Datasheet for ABIN931062

anti-TPX2 antibody**3** Images[Go to Product page](#)

Overview

| | |
|--------------|--|
| Quantity: | 100 µg |
| Target: | TPX2 |
| Reactivity: | Human |
| Host: | Mouse |
| Clonality: | Monoclonal |
| Conjugate: | This TPX2 antibody is un-conjugated |
| Application: | Western Blotting (WB), Immunoprecipitation (IP), Immunocytochemistry (ICC), Flow Cytometry (FACS), Dot Blot (DB) |

Product Details

| | |
|-----------------------------|---|
| Immunogen: | TPX2 antibody was raised in mouse using recombinant Human Tpx2, Microtubule-Associated, Homolog (Xenopus Laevis) (Tpx2) |
| Clone: | 3164C6a |
| Isotype: | IgG1 |
| Cross-Reactivity: | Human |
| Cross-Reactivity (Details): | Other species not studied. |
| Purification: | Protein G affinity chromatography |

Target Details

| | |
|---------|------|
| Target: | TPX2 |
|---------|------|

Target Details

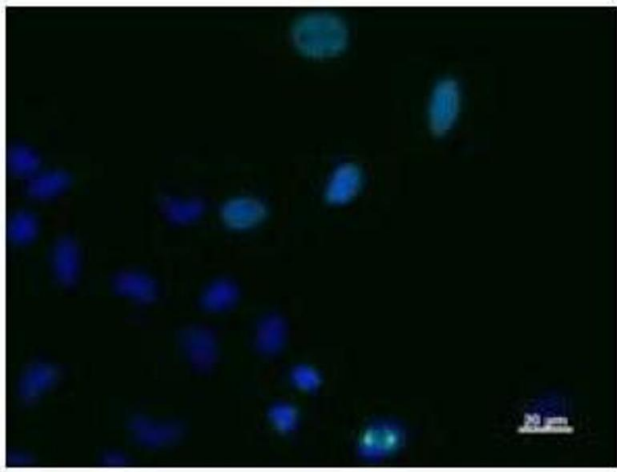
| | |
|-------------------|---|
| Alternative Name: | TPX2 (TPX2 Products) |
| Background: | TPX2 is a spindle assembly factor. Required for normal assembly of mitotic spindles. Required for normal assembly of microtubules during apoptosis. Required for chromatin and/or kinetochore dependent microtubule nucleation. Mediates AURKA localization to spindle microtubules. Activates AURKA by promoting its autophosphorylation at 'Thr 288' and protects this residue against dephosphorylation. Synonyms: Monoclonal TPX2 antibody, Anti-TPX2 antibody, Targeting protein for Xklp2 antibody, DIL2 antibody, p100 antibody, DIL-2 antibody, HCTP4 antibody, FLS353 antibody, HCA519 antibody, REPP86 antibody, C20orf1 antibody, C20orf2 antibody, GD:C20orf1 antibody. |

Application Details

| | |
|--------------------|---|
| Application Notes: | WB: 0.2-2 µg/mL, IP: 100-500 µg/sample, FC: 0.5-2 µg/sample, ICC: 2-100 µg/mL Optimal conditions should be determined by the investigator. |
| Restrictions: | For Research Use only |

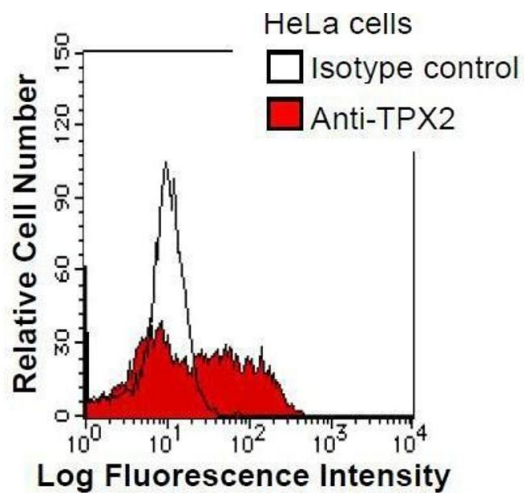
Handling

| | |
|--------------------|--|
| Concentration: | Lot specific |
| Buffer: | TPX2 antibody in PBS (3.0 mM KCl, 1.5 mM KH ₂ PO ₄ , 140 mM NaCl, 8.0 mM Na ₂ HPO ₄ (pH 7.4)) containing 1 % bovine serum albumin (BSA) and 0.05 % sodium azide (NaN ₃). |
| Preservative: | Sodium azide |
| Precaution of Use: | This product contains Sodium Azide: a POISONOUS AND HAZARDOUS SUBSTANCE, which should be handled by trained staff only. |
| Handling Advice: | Avoid repeated freeze/thaw cycles. Dilute only prior to immediate use. |
| Storage: | 4 °C/-20 °C |
| Storage Comment: | Store at 2-8 °C for up to one year. We recommend long term storage at -20 °C. |



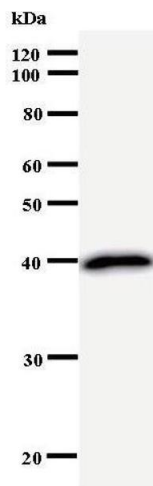
Immunofluorescence

Image 1. Immunostaining analysis in HeLa cells. HeLa cells were fixed with 4% paraformaldehyde and permeabilized with 0.01% Triton-X100 in PBS. The cells were immunostained with anti-TPX2 antibody. Nuclear was stained with Hoechst (blue fluorescence).



Flow Cytometry

Image 2. HeLa cells were fixed in 2% paraformaldehyde/PBS and then permeabilized in 90% methanol. Cells were stained with anti-TPX2 antibody (shaded) or isotype control (unshaded) followed by Alexa Fluor 488 conjugated goat anti-mouse IgG.



Western Blotting

Image 3.