

Datasheet for ABIN931064
anti-MAML3 antibody



[Go to Product page](#)

1 Image

Overview

Quantity:	100 µg
Target:	MAML3
Reactivity:	Human
Host:	Mouse
Clonality:	Monoclonal
Conjugate:	This MAML3 antibody is un-conjugated
Application:	Dot Blot (DB)

Product Details

Immunogen:	MAML3 antibody was raised in mouse using recombinant Human Mastermind-Like 3 (Drosophila) (Maml3)
Clone:	797C2a
Isotype:	IgG1
Cross-Reactivity:	Human
Cross-Reactivity (Details):	Other species not studied.
Purification:	Protein G affinity chromatography

Target Details

Target:	MAML3
Alternative Name:	MAML3 (MAML3 Products)

Target Details

Background: MAML3 Acts as a transcriptional coactivator for NOTCH proteins and has been shown to amplify NOTCH-induced transcription of HES1. Synonyms: Monoclonal MAML3 antibody, Anti-MAML3 antibody, Mastermind like 3 antibody, GDN antibody, MAM2 antibody, CAGH3 antibody, ERDA3 antibody, MAM-2 antibody, TNRC3 antibody.

Application Details

Application Notes: Optimal conditions should be determined by the investigator.

Restrictions: For Research Use only

Handling

Concentration: Lot specific

Buffer: MAML3 antibody in PBS (3.0 mM KCl, 1.5 mM KH₂ PO₄, 140 mM NaCl, 8.0 mM Na₂ HPO₄ (pH 7.4)) containing 1 % bovine serum albumin (BSA) and 0.05 % sodium azide (NaN₃).

Preservative: Sodium azide

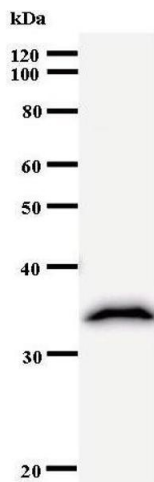
Precaution of Use: This product contains Sodium Azide: a POISONOUS AND HAZARDOUS SUBSTANCE, which should be handled by trained staff only.

Handling Advice: Avoid repeated freeze/thaw cycles.
Dilute only prior to immediate use.

Storage: 4 °C/-20 °C

Storage Comment: Store at 2-8 °C for up to one year. We recommend long term storage at -20 °C.

Images



Western Blotting

Image 1.