

Datasheet for ABIN931066

anti-POLD2 antibody (Regulatory Subunit 50)[Go to Product page](#)**1** Image

Overview

Quantity:	100 µg
Target:	POLD2
Binding Specificity:	Regulatory Subunit 50
Reactivity:	Human
Host:	Mouse
Clonality:	Monoclonal
Conjugate:	This POLD2 antibody is un-conjugated
Application:	Dot Blot (DB)

Product Details

Immunogen:	POLD2 antibody was raised in mouse using recombinant Human Polymerase (Dna Directed), Delta 2, Regulatory Subunit 50 Kda (Pold2)
Clone:	2762C3a
Isotype:	IgG1
Cross-Reactivity:	Human
Cross-Reactivity (Details):	Other species not studied.
Purification:	Protein G affinity chromatography

Target Details

Target:	POLD2
---------	-------

Target Details

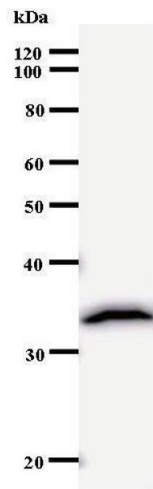
Alternative Name:	POLD2 (POLD2 Products)
Background:	The POLD2 gene encodes DNA polymerase delta subunit 2 enzyme. It is a component of the DNA polymerase delta complex. Synonyms: Monoclonal POLD2 antibody, Anti-POLD2 antibody, DNA polymerase delta subunit 2 antibody.
Pathways:	Telomere Maintenance , DNA Damage Repair , DNA Replication , Synthesis of DNA

Application Details

Application Notes:	Optimal conditions should be determined by the investigator.
Restrictions:	For Research Use only

Handling

Concentration:	Lot specific
Buffer:	POLD2 antibody in PBS (3.0 mM KCl, 1.5 mM KH ₂ PO ₄ , 140 mM NaCl, 8.0 mM Na ₂ HPO ₄ (pH 7.4)) containing 1 % bovine serum albumin (BSA) and 0.05 % sodium azide (NaN ₃).
Preservative:	Sodium azide
Precaution of Use:	This product contains Sodium Azide: a POISONOUS AND HAZARDOUS SUBSTANCE, which should be handled by trained staff only.
Handling Advice:	Avoid repeated freeze/thaw cycles. Dilute only prior to immediate use.
Storage:	4 °C/-20 °C
Storage Comment:	Store at 2-8 °C for up to one year. We recommend long term storage at -20 °C.



Western Blotting

Image 1.