

Datasheet for ABIN931069
anti-POLR1D antibody



[Go to Product page](#)

1 Image

Overview

Quantity:	100 µg
Target:	POLR1D
Reactivity:	Human
Host:	Mouse
Clonality:	Monoclonal
Conjugate:	This POLR1D antibody is un-conjugated
Application:	Dot Blot (DB)

Product Details

Immunogen:	POLR1 D antibody was raised in mouse using recombinant Human Polymerase (Rna) I Polypeptide D, 11 da (Polr1)
Clone:	2774C3a
Isotype:	IgG1
Cross-Reactivity:	Human
Cross-Reactivity (Details):	Other species not studied.
Purification:	Protein G affinity chromatography

Target Details

Target:	POLR1D
Alternative Name:	POLR1D (POLR1D Products)

Target Details

Background: DNA-dependent RNA polymerase catalyzes the transcription of DNA into RNA using the four ribonucleoside triphosphates as substrates. Common core component of RNA polymerases I and III which synthesize ribosomal RNA precursors and small RNAs, such as 5S rRNA and tRNAs, respectively. Synonyms: Monoclonal POLR1D antibody, Anti-POLR1D antibody, Polymerase (RNA) I polypeptide D antibody, RPA9 antibody, RPA16 antibody, RPAC2 antibody, POLR1C antibody, RPO1-3 antibody, MGC9850 antibody, FLJ20616 antibody.

Application Details

Application Notes: Optimal conditions should be determined by the investigator.

Restrictions: For Research Use only

Handling

Concentration: Lot specific

Buffer: POLR1 D antibody in PBS (3.0 mM KCl, 1.5 mM KH₂ PO₄, 140 mM NaCl, 8.0 mM Na₂ HPO₄ (pH 7.4)) containing 1 % bovine serum albumin (BSA) and 0.05 % sodium azide (NaN₃).

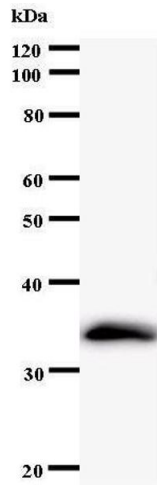
Preservative: Sodium azide

Precaution of Use: This product contains Sodium Azide: a POISONOUS AND HAZARDOUS SUBSTANCE, which should be handled by trained staff only.

Handling Advice: Avoid repeated freeze/thaw cycles.
Dilute only prior to immediate use.

Storage: 4 °C/-20 °C

Storage Comment: Store at 2-8 °C for up to one year. We recommend long term storage at -20 °C.



Western Blotting

Image 1.