

Datasheet for ABIN931078

anti-TUBD1 antibody**1** Image[Go to Product page](#)

Overview

Quantity:	100 µg
Target:	TUBD1
Reactivity:	Human
Host:	Mouse
Clonality:	Monoclonal
Conjugate:	This TUBD1 antibody is un-conjugated
Application:	Dot Blot (DB)

Product Details

Immunogen:	TUBD1 antibody was raised in mouse using recombinant Human Tubulin, Delta 1 (Tubd1)
Clone:	3183C3a
Isotype:	IgG1
Cross-Reactivity:	Human
Cross-Reactivity (Details):	Other species not studied.
Purification:	Protein G affinity chromatography

Target Details

Target:	TUBD1
Alternative Name:	TUBD1 (TUBD1 Products)
Background:	In the elongating spermatid TUBD1 is associated with the manchette, a specialized microtubule

Target Details

system present during reshaping of the sperm head. Synonyms: Monoclonal TUBD1 antibody, Anti-TUBD1 antibody, Tubulin delta chain 1 antibody, TUBD antibody, FLJ12709 antibody.

Pathways: [Microtubule Dynamics](#)

Application Details

Application Notes: Optimal conditions should be determined by the investigator.

Restrictions: For Research Use only

Handling

Concentration: Lot specific

Buffer: TUBD1 antibody in PBS (3.0 mM KCl, 1.5 mM KH₂ PO₄, 140 mM NaCl, 8.0 mM Na₂ HPO₄ (pH 7.4)) containing 1 % bovine serum albumin (BSA) and 0.05 % sodium azide (NaN₃).

Preservative: Sodium azide

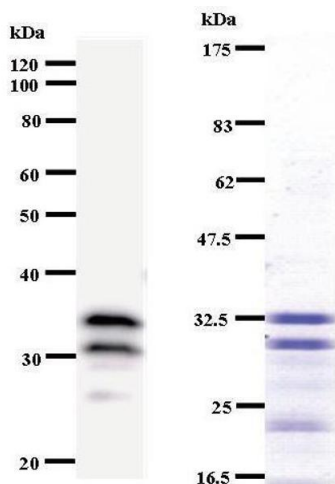
Precaution of Use: This product contains Sodium Azide: a POISONOUS AND HAZARDOUS SUBSTANCE, which should be handled by trained staff only.

Handling Advice: Avoid repeated freeze/thaw cycles.
Dilute only prior to immediate use.

Storage: 4 °C/-20 °C

Storage Comment: Store at 2-8 °C for up to one year. We recommend long term storage at -20 °C.

Images



Western Blotting

Image 1. Left: TUBD1 staining. Right: Coomassie Blue staining of immunized recombinant protein.