

Datasheet for ABIN931090

**anti-ZEB1 antibody**[Go to Product page](#)**1** Image

## Overview

Quantity:	100 µg
Target:	ZEB1
Reactivity:	Human
Host:	Mouse
Clonality:	Monoclonal
Conjugate:	This ZEB1 antibody is un-conjugated
Application:	Dot Blot (DB)

## Product Details

Immunogen:	TCF8 antibody was raised in mouse using recombinant Human Zinc Finger E-Box Binding Homeobox 1 (Zeb1)
Clone:	416A7H10
Isotype:	IgG1
Cross-Reactivity:	Human
Cross-Reactivity (Details):	Other species not studied.
Purification:	Protein G affinity chromatography

## Target Details

Target:	ZEB1
Alternative Name:	TCF8 ( <a href="#">ZEB1 Products</a> )

## Target Details

---

**Background:** TCF8 encodes a human zinc finger transcription factor that represses T-lymphocyte-specific IL2 gene expression by binding to a negative regulatory domain 100 nucleotides 5-prime of the IL2 transcription start site. Synonyms: Monoclonal TCF8 antibody, Anti-TCF8 antibody, Zinc finger E-box binding homeobox 1 antibody, ZEB1 antibody, BZP antibody, ZEB antibody, AREB6 antibody, ZFHEP antibody, NIL-2A antibody, ZFHX1A antibody, NIL-2-A antibody.

**Pathways:** [Regulation of Muscle Cell Differentiation](#)

## Application Details

---

**Application Notes:** Optimal conditions should be determined by the investigator.

**Restrictions:** For Research Use only

## Handling

---

**Concentration:** Lot specific

**Buffer:** TCF8 antibody in PBS (3.0 mM KCl, 1.5 mM KH<sub>2</sub>PO<sub>4</sub>, 140 mM NaCl, 8.0 mM Na<sub>2</sub>HPO<sub>4</sub> (pH 7.4)) containing 1 % bovine serum albumin (BSA) and 0.05 % sodium azide (NaN<sub>3</sub>).

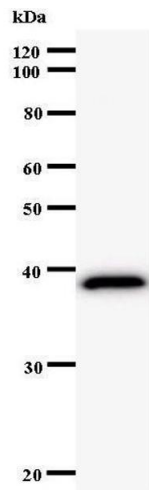
**Preservative:** Sodium azide

**Precaution of Use:** This product contains Sodium Azide: a POISONOUS AND HAZARDOUS SUBSTANCE, which should be handled by trained staff only.

**Handling Advice:** Avoid repeated freeze/thaw cycles.  
Dilute only prior to immediate use.

**Storage:** 4 °C/-20 °C

**Storage Comment:** Store at 2-8 °C for up to one year. We recommend long term storage at -20 °C.



### Western Blotting

Image 1.