

Datasheet for ABIN931099

**anti-FBXL4 antibody**[Go to Product page](#)**1** Image

## Overview

Quantity:	100 µg
Target:	FBXL4
Reactivity:	Human
Host:	Mouse
Clonality:	Monoclonal
Conjugate:	This FBXL4 antibody is un-conjugated
Application:	Dot Blot (DB)

## Product Details

Immunogen:	FBXL4 antibody was raised in mouse using recombinant Human F-Box And Leucine-Rich Repeat Protein 4 (Fbxl4)
Clone:	2352C1a
Isotype:	IgG1
Cross-Reactivity:	Human
Cross-Reactivity (Details):	Other species not studied.
Purification:	Protein G affinity chromatography

## Target Details

Target:	FBXL4
Alternative Name:	FBXL4 ( <a href="#">FBXL4 Products</a> )

## Target Details

---

**Background:** This gene encodes a member of the F-box protein family which is characterized by an approximately 40 amino acid motif, the F-box. The F-box proteins constitute one of the four subunits of ubiquitin protein ligase complex called SCFs, which function in phosphorylation-dependent ubiquitination. The F-box proteins are divided into 3 classes: Fbws containing WD-40 domains, Fbls containing leucine-rich repeats, and Fbxs containing either different protein-protein interaction modules or no recognizable motifs. The protein encoded by this gene belongs to the Fbls class and, in addition to an F-box, contains at least 9 tandem leucine-rich repeats. Synonyms: Monoclonal FBXL4 antibody, Anti-FBXL4 antibody, F-box and leucine-rich repeat protein 4 antibody, FBL4 antibody, FBL5 antibody.

## Application Details

---

**Application Notes:** Optimal conditions should be determined by the investigator.

**Restrictions:** For Research Use only

## Handling

---

**Concentration:** Lot specific

**Buffer:** FBXL4 antibody in PBS (3.0 mM KCl, 1.5 mM KH<sub>2</sub> PO<sub>4</sub>, 140 mM NaCl, 8.0 mM Na<sub>2</sub> HPO<sub>4</sub> (pH 7.4)) containing 1 % bovine serum albumin (BSA) and 0.05 % sodium azide (NaN<sub>3</sub>).

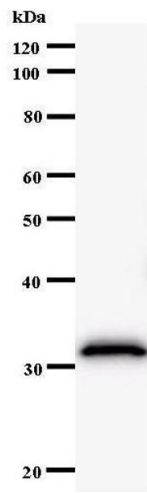
**Preservative:** Sodium azide

**Precaution of Use:** This product contains Sodium Azide: a POISONOUS AND HAZARDOUS SUBSTANCE, which should be handled by trained staff only.

**Handling Advice:** Avoid repeated freeze/thaw cycles.  
Dilute only prior to immediate use.

**Storage:** 4 °C/-20 °C

**Storage Comment:** Store at 2-8 °C for up to one year. We recommend long term storage at -20 °C.



## Western Blotting

Image 1.