

Datasheet for ABIN931100
anti-Golgin B1 (GOLGB1) antibody



[Go to Product page](#)

1 Image

Overview

Quantity: 100 µg

Target: Golgin B1 (GOLGB1)

Reactivity: Human

Host: Mouse

Clonality: Monoclonal

Conjugate: Un-conjugated

Application: Dot Blot (DB)

Product Details

Immunogen: GOLGB1 antibody was raised in mouse using recombinant Human Golgi Autoantigen, Golgin Subfamily B, Macrogolgin(With Transmembrane Signal), 1 (Golgb1)

Clone: 2388C3a

Isotype: IgG1

Cross-Reactivity: Human

Cross-Reactivity (Details): Other species not studied.

Purification: Protein G affinity chromatography

Target Details

Target: Golgin B1 (GOLGB1)

Alternative Name: [GOLGB1 \(GOLGB1 Products\)](#)

Target Details

Background: GOLGB1 has been shown to interact with ACBD3, which plays a key role in the sorting and modification of proteins exported from the endoplasmic reticulum. Synonyms: Monoclonal GOLGB1 antibody, Anti-GOLGB1 antibody, Golgin subfamily B member 1 antibody, GCP antibody, GCP372 antibody, GIANTIN antibody.

Pathways: [SARS-CoV-2 Protein Interactome](#)

Application Details

Application Notes: Optimal conditions should be determined by the investigator.

Restrictions: For Research Use only

Handling

Concentration: Lot specific

Buffer: GOLGB1 antibody in PBS (3.0 mM KCl, 1.5 mM KH₂ PO₄, 140 mM NaCl, 8.0 mM Na₂ HPO₄ (pH 7.4)) containing 1 % bovine serum albumin (BSA) and 0.05 % sodium azide (NaN₃).

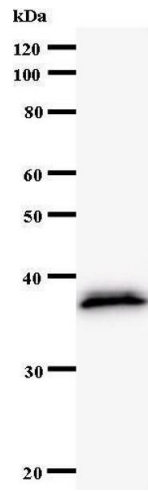
Preservative: Sodium azide

Precaution of Use: This product contains Sodium Azide: a POISONOUS AND HAZARDOUS SUBSTANCE, which should be handled by trained staff only.

Handling Advice: Avoid repeated freeze/thaw cycles.
Dilute only prior to immediate use.

Storage: 4 °C/-20 °C

Storage Comment: Store at 2-8 °C for up to one year. We recommend long term storage at -20 °C.



Western Blotting

Image 1.