

Datasheet for ABIN931110 **anti-HCFC2 antibody**



[Go to Product page](#)

1 Image

Overview

Quantity:	100 µg
Target:	HCFC2
Reactivity:	Human
Host:	Mouse
Clonality:	Monoclonal
Conjugate:	This HCFC2 antibody is un-conjugated
Application:	Dot Blot (DB)

Product Details

Immunogen:	HCFC2 antibody was raised in mouse using recombinant Human Host Cell Factor C2
Clone:	192D3a
Isotype:	IgG1
Cross-Reactivity:	Human
Cross-Reactivity (Details):	Other species not studied.
Purification:	Protein G affinity chromatography

Target Details

Target:	HCFC2
Alternative Name:	HCFC2 (HCFC2 Products)
Background:	This gene encodes one of two proteins which interact with VP16, a herpes simplex virus protein

Target Details

that initiates virus infection. Both the encoded protein and the original Herpes host cell factor interact with VP16 through a beta-propeller domain. The original Herpes host cell factor, however, is effective at initiating viral infection while the encoded protein is not. Transcripts of varying length due to alternative polyadenylation signals have been described. Synonyms: Monoclonal HCFC2 antibody, Anti-HCFC2 antibody, Host cell factor C2 antibody, HCF2 antibody, HCF-2 antibody.

Application Details

Application Notes: Optimal conditions should be determined by the investigator.

Restrictions: For Research Use only

Handling

Concentration: Lot specific

Buffer: HCFC2 antibody in PBS (3.0 mM KCl, 1.5 mM KH₂ PO₄, 140 mM NaCl, 8.0 mM Na₂ HPO₄ (pH 7.4)) containing 1 % bovine serum albumin (BSA) and 0.05 % sodium azide (NaN₃).

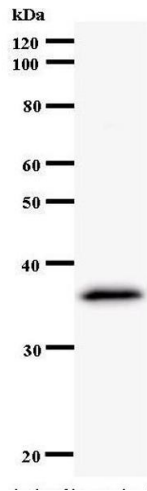
Preservative: Sodium azide

Precaution of Use: This product contains Sodium Azide: a POISONOUS AND HAZARDOUS SUBSTANCE, which should be handled by trained staff only.

Handling Advice: Avoid repeated freeze/thaw cycles.
Dilute only prior to immediate use.

Storage: 4 °C/-20 °C

Storage Comment: Store at 2-8 °C for up to one year. We recommend long term storage at -20 °C.



Western Blotting

Image 1.