

Datasheet for ABIN931117 **anti-MTA3 antibody**

1 Image



[Go to Product page](#)

Overview

Quantity:	100 µg
Target:	MTA3
Reactivity:	Human
Host:	Mouse
Clonality:	Monoclonal
Conjugate:	This MTA3 antibody is un-conjugated
Application:	Dot Blot (DB)

Product Details

Immunogen:	MTA3 antibody was raised in mouse using recombinant Human Metastasis Associated 1 Family, Member 3
Clone:	428C2a
Isotype:	IgG1
Cross-Reactivity:	Human
Cross-Reactivity (Details):	Other species not studied.
Purification:	Protein G affinity chromatography

Target Details

Target:	MTA3
Alternative Name:	MTA3 (MTA3 Products)

Target Details

Background: MTA3 plays a role in maintenance of the normal epithelial architecture through the repression of SNAI1 transcription in a histone deacetylase-dependent manner, and thus the regulation of E-cadherin levels. Synonyms: Monoclonal MTA3 antibody, Anti-MTA3 antibody, Metastasis associated 1 family member 3 antibody, KIAA1266 antibody.

Pathways: [Chromatin Binding](#)

Application Details

Application Notes: Optimal conditions should be determined by the investigator.

Restrictions: For Research Use only

Handling

Concentration: Lot specific

Buffer: MTA3 antibody in PBS (3.0 mM KCl, 1.5 mM KH₂ PO₄, 140 mM NaCl, 8.0 mM Na₂ HPO₄ (pH 7.4)) containing 1 % bovine serum albumin (BSA) and 0.05 % sodium azide (NaN₃).

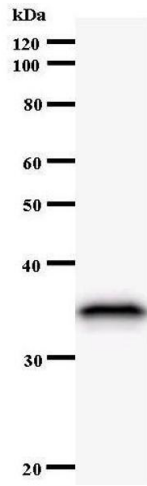
Preservative: Sodium azide

Precaution of Use: This product contains Sodium Azide: a POISONOUS AND HAZARDOUS SUBSTANCE, which should be handled by trained staff only.

Handling Advice: Avoid repeated freeze/thaw cycles.
Dilute only prior to immediate use.

Storage: 4 °C/-20 °C

Storage Comment: Store at 2-8 °C for up to one year. We recommend long term storage at -20 °C.



Western Blotting

Image 1.