

Datasheet for ABIN931125
anti-HIRIP3 antibody



[Go to Product page](#)

1 Image

Overview

Quantity:	100 µg
Target:	HIRIP3
Reactivity:	Human
Host:	Mouse
Clonality:	Monoclonal
Conjugate:	This HIRIP3 antibody is un-conjugated
Application:	Dot Blot (DB)

Product Details

Immunogen:	HIRIP3 antibody was raised in mouse using recombinant Human Hira Interacting Protein 3
Sequence:	EEDEEKGDWK EEDEEKGDWK EEDEEKGDWK EEDEEKGDWK EEDEEKGDWK EEDEEKGDWK EEDEEKGDWK EEDEEKGDWK EEDEEKGDWK EEDEEKGDWK S
Clone:	2415C2a
Isotype:	IgG1
Cross-Reactivity:	Human
Cross-Reactivity (Details):	Other species not studied.
Purification:	Protein G affinity chromatography

Target Details

Target:	HIRIP3
---------	--------

Target Details

Alternative Name: HIRIP3 ([HIRIP3 Products](#))

Background: The HIRA protein shares sequence similarity with Hir1p and Hir2p, the two corepressors of histone gene transcription characterized in the yeast, *Saccharomyces cerevisiae*. The structural features of the HIRA protein suggest that it may function as part of a multiprotein complex. Recently, several cDNAs encoding HIRA-interacting proteins, or HIRIPs, have been identified. In vitro, the HIRIP3 gene product binds HIRA, as well as H2B and H3 core histones, indicating that a complex containing HIRA-HIRIP3 could function in some aspects of chromatin and histone metabolism. Alternatively spliced transcript variants encoding distinct isoforms have been found for this gene. Synonyms: Monoclonal HIRIP3 antibody, HIRA interacting protein 3 antibody, Anti-HIRIP3 antibody.

Application Details

Application Notes: Optimal conditions should be determined by the investigator.

Restrictions: For Research Use only

Handling

Concentration: Lot specific

Buffer: HIRIP3 antibody in PBS (3.0 mM KCl, 1.5 mM KH₂PO₄, 140 mM NaCl, 8.0 mM Na₂HPO₄ (pH 7.4)) containing 1 % bovine serum albumin (BSA) and 0.05 % sodium azide (NaN₃).

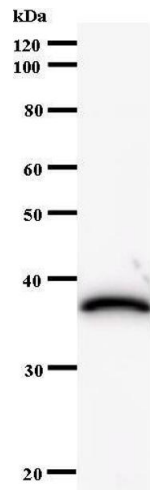
Preservative: Sodium azide

Precaution of Use: This product contains Sodium Azide: a POISONOUS AND HAZARDOUS SUBSTANCE, which should be handled by trained staff only.

Handling Advice: Avoid repeated freeze/thaw cycles.
Dilute only prior to immediate use.

Storage: 4 °C/-20 °C

Storage Comment: Store at 2-8 °C for up to one year. We recommend long term storage at -20 °C.



Western Blotting

Image 1.