

Datasheet for ABIN931127
anti-CBFB antibody

2 Images



[Go to Product page](#)

Overview

Quantity:	50 µg
Target:	CBFB
Reactivity:	Human
Host:	Mouse
Clonality:	Monoclonal
Conjugate:	This CBFB antibody is un-conjugated
Application:	Western Blotting (WB), Immunocytochemistry (ICC), Dot Blot (DB)

Product Details

Immunogen:	CBFB antibody was raised in mouse using recombinant Human Core-Binding Factor, Beta Subunit
Clone:	344C3a
Isotype:	IgG1
Cross-Reactivity:	Human
Cross-Reactivity (Details):	Other species not studied.
Purification:	Protein G affinity chromatography

Target Details

Target:	CBFB
Alternative Name:	CBFB (CBFB Products)

Target Details

Background: The protein encoded by this gene is the beta subunit of a heterodimeric core-binding transcription factor belonging to the PEBP2/CBF transcription factor family which master-regulates a host of genes specific to hematopoiesis (e.g., RUNX1) and osteogenesis (e.g., RUNX2). The beta subunit is a non-DNA binding regulatory subunit, it allosterically enhances DNA binding by alpha subunit as the complex binds to the core site of various enhancers and promoters, including murine leukemia virus, polyomavirus enhancer, T-cell receptor enhancers and GM-CSF promoters. Synonyms: Monoclonal CBFB antibody, Anti-CBFB antibody, Core-binding factor subunit beta antibody, PEBP2B antibody.

Pathways: [Regulation of Lipid Metabolism by PPARalpha](#)

Application Details

Application Notes: WB: 0.2-2 µg/mL
Optimal conditions should be determined by the investigator.

Restrictions: For Research Use only

Handling

Concentration: Lot specific

Buffer: CBFB antibody in PBS (3.0 mM KCl, 1.5 mM KH₂ PO₄, 140 mM NaCl, 8.0 mM Na₂ HPO₄ (pH 7.4)) containing 1 % bovine serum albumin (BSA) and 0.05 % sodium azide (NaN₃).

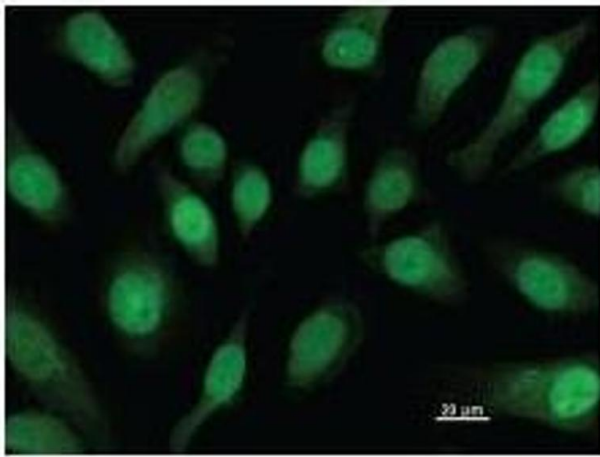
Preservative: Sodium azide

Precaution of Use: This product contains Sodium Azide: a POISONOUS AND HAZARDOUS SUBSTANCE, which should be handled by trained staff only.

Handling Advice: Avoid repeated freeze/thaw cycles.
Dilute only prior to immediate use.

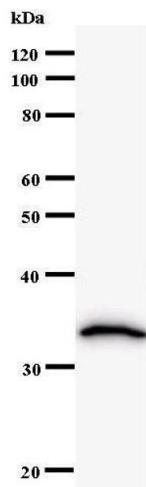
Storage: 4 °C/-20 °C

Storage Comment: Store at 2-8 °C for up to one year. We recommend long term storage at -20 °C.



Immunofluorescence

Image 1. Immunostaining analysis in HeLa cells. HeLa cells were fixed with 4% paraformaldehyde and permeabilized with 0.01% Triton-X100 in PBS. The cells were immunostained with anti-CBFB antibody.



Western Blotting

Image 2.