

## Datasheet for ABIN931129 **anti-EXOSC9 antibody**



[Go to Product page](#)

### 1 Image

#### Overview

Quantity:	100 µg
Target:	EXOSC9
Reactivity:	Human
Host:	Mouse
Clonality:	Monoclonal
Conjugate:	This EXOSC9 antibody is un-conjugated
Application:	Dot Blot (DB)

#### Product Details

Immunogen:	EXOSC9 antibody was raised in mouse using recombinant Human Exosome Component 9
Clone:	2337C3a
Isotype:	IgG1
Cross-Reactivity:	Human
Cross-Reactivity (Details):	Other species not studied.
Purification:	Protein G affinity chromatography

#### Target Details

Target:	EXOSC9
Alternative Name:	EXOSC9 ( <a href="#">EXOSC9 Products</a> )
Background:	EXOSC9 is a component of the exosome 3'->5' exoribonuclease complex, a complex that

## Target Details

---

degrades inherently unstable mRNAs containing AU-rich elements (AREs) within their 3'-untranslated regions. It is required for the 3'-processing of the 7S pre-RNA to the mature 5.8S rRNA. Has a 3'-5' exonuclease activity (By similarity). Synonyms: Monoclonal EXOSC9 antibody, Anti-EXOSC9 antibody, Exosome component 9 antibody, p5 antibody, p6 antibody, RRP45 antibody, PMSCL1 antibody, Rrp45p antibody, PM/ScI-75 antibody.

## Application Details

---

Application Notes: Optimal conditions should be determined by the investigator.

Restrictions: For Research Use only

## Handling

---

Concentration: Lot specific

Buffer: EXOSC9 antibody in PBS (3.0 mM KCl, 1.5 mM KH<sub>2</sub> PO<sub>4</sub>, 140 mM NaCl, 8.0 mM Na<sub>2</sub> HPO<sub>4</sub> (pH 7.4)) containing 1 % bovine serum albumin (BSA) and 0.05 % sodium azide (NaN<sub>3</sub>).

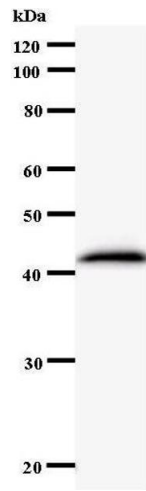
Preservative: Sodium azide

Precaution of Use: This product contains Sodium Azide: a POISONOUS AND HAZARDOUS SUBSTANCE, which should be handled by trained staff only.

Handling Advice: Avoid repeated freeze/thaw cycles.  
Dilute only prior to immediate use.

Storage: 4 °C/-20 °C

Storage Comment: Store at 2-8 °C for up to one year. We recommend long term storage at -20 °C.



### Western Blotting

Image 1.