

Datasheet for ABIN931147
anti-CTCF antibody

2 Images



[Go to Product page](#)

Overview

Quantity:	100 µg
Target:	CTCF
Reactivity:	Human
Host:	Mouse
Clonality:	Monoclonal
Conjugate:	This CTCF antibody is un-conjugated
Application:	Immunocytochemistry (ICC), Dot Blot (DB)

Product Details

Immunogen:	CTCF antibody was raised in mouse using recombinant Human Ccctc-Binding Factor (Zinc Finger Protein)
Clone:	252C3a
Isotype:	IgG1
Cross-Reactivity:	Human
Cross-Reactivity (Details):	Other species not studied.
Purification:	Protein G affinity chromatography

Target Details

Target:	CTCF
Alternative Name:	CTCF (CTCF Products)

Target Details

Background: This gene is a member of the BORIS + CTCF gene family and encodes a transcriptional regulator protein with 11 highly conserved zinc finger (ZF) domains. This nuclear protein is able to use different combinations of the ZF domains to bind different DNA target sequences and proteins. Depending upon the context of the site, the protein can bind a histone acetyltransferase (HAT)-containing complex and function as a transcriptional activator or bind a histone deacetylase (HDAC)-containing complex and function as a transcriptional repressor. If the protein is bound to a transcriptional insulator element, it can block communication between enhancers and upstream promoters, thereby regulating imprinted expression. Mutations in this gene have been associated with invasive breast cancers, prostate cancers, and Wilms' tumors. Synonyms: Monoclonal CTCF antibody, Anti-CTCF antibody, CCCTC-binding factor (zinc finger protein) antibody.

Application Details

Application Notes: ICC: 2-100 µg/mL
Optimal conditions should be determined by the investigator.

Restrictions: For Research Use only

Handling

Concentration: Lot specific

Buffer: CTCF antibody in PBS (3.0 mM KCl, 1.5 mM KH₂ PO₄, 140 mM NaCl, 8.0 mM Na₂ HPO₄ (pH 7.4)) containing 1 % bovine serum albumin (BSA) and 0.05 % sodium azide (NaN₃).

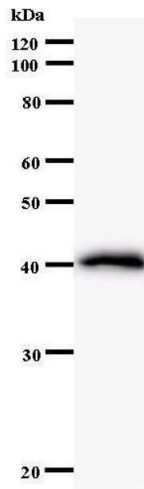
Preservative: Sodium azide

Precaution of Use: This product contains Sodium Azide: a POISONOUS AND HAZARDOUS SUBSTANCE, which should be handled by trained staff only.

Handling Advice: Avoid repeated freeze/thaw cycles.
Dilute only prior to immediate use.

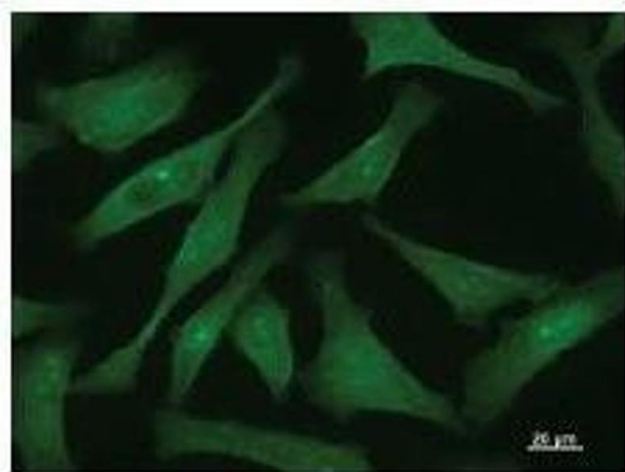
Storage: 4 °C/-20 °C

Storage Comment: Store at 2-8 °C for up to one year. We recommend long term storage at -20 °C.



Western Blotting

Image 1.



Immunofluorescence

Image 2. Immunostaining analysis in HeLa cells. HeLa cells were fixed with 4% paraformaldehyde and permeabilized with 0.01% Triton-X100 in PBS. The cells were immunostained with anti-CTCF antibody.