

Datasheet for ABIN931153
anti-E2F5 antibody



[Go to Product page](#)

2 Images

Overview

| | |
|--------------|--|
| Quantity: | 100 µg |
| Target: | E2F5 |
| Reactivity: | Human |
| Host: | Mouse |
| Clonality: | Monoclonal |
| Conjugate: | This E2F5 antibody is un-conjugated |
| Application: | Dot Blot (DB), Immunocytochemistry (ICC) |

Product Details

| | |
|-----------------------------|---|
| Immunogen: | E2 F5 antibody was raised in mouse using recombinant Human Transcription Factor E2 -5 |
| Clone: | 220D1a |
| Isotype: | IgG1 |
| Cross-Reactivity: | Human |
| Cross-Reactivity (Details): | Other species not studied. |
| Purification: | Protein G affinity chromatography |

Target Details

| | |
|-------------------|--|
| Target: | E2F5 |
| Alternative Name: | E2F5 (E2F5 Products) |
| Background: | The protein encoded by this gene is a member of the E2F family of transcription factors. The |

Target Details

E2F family plays a crucial role in the control of cell cycle and action of tumor suppressor proteins and is also a target of the transforming proteins of small DNA tumor viruses. The E2F proteins contain several evolutionarily conserved domains that are present in most members of the family. These domains include a DNA binding domain, a dimerization domain which determines interaction with the differentiation regulated transcription factor proteins (DP), a transactivation domain enriched in acidic amino acids, and a tumor suppressor protein association domain which is embedded within the transactivation domain. This protein is differentially phosphorylated and is expressed in a wide variety of human tissues. It has higher identity to E2F4 than to other family members. Synonyms: Monoclonal E2F5 antibody, Anti-E2F5 antibody, E2F transcription factor 5 p130-binding antibody.

Application Details

Application Notes: ICC: 2-100 µg/mL
Optimal conditions should be determined by the investigator.

Restrictions: For Research Use only

Handling

Concentration: Lot specific

Buffer: E2 F5 antibody in PBS (3.0 mM KCl, 1.5 mM KH₂ PO₄, 140 mM NaCl, 8.0 mM Na₂ HPO₄ (pH 7.4)) containing 1 % bovine serum albumin (BSA) and 0.05 % sodium azide (NaN₃).

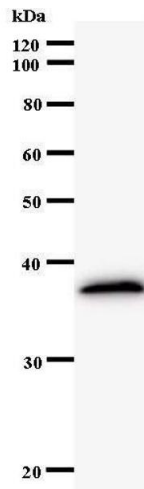
Preservative: Sodium azide

Precaution of Use: This product contains Sodium Azide: a POISONOUS AND HAZARDOUS SUBSTANCE, which should be handled by trained staff only.

Handling Advice: Avoid repeated freeze/thaw cycles.
Dilute only prior to immediate use.

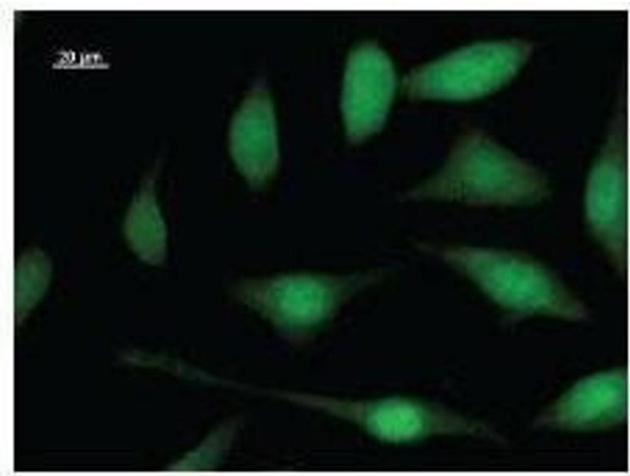
Storage: 4 °C/-20 °C

Storage Comment: Store at 2-8 °C for up to one year. We recommend long term storage at -20 °C.



Western Blotting

Image 1.



Immunofluorescence

Image 2. Immunostaining analysis in HeLa cells. HeLa cells were fixed with 4% paraformaldehyde and permeabilized with 0.01% Triton-X100 in PBS. The cells were immunostained with anti-E2F5 antibody.