

Datasheet for ABIN931160
anti-ORC6 antibody

2 Images



[Go to Product page](#)

Overview

| | |
|--------------|--|
| Quantity: | 100 µg |
| Target: | ORC6 |
| Reactivity: | Human |
| Host: | Mouse |
| Clonality: | Monoclonal |
| Conjugate: | This ORC6 antibody is un-conjugated |
| Application: | Dot Blot (DB), Immunocytochemistry (ICC) |

Product Details

| | |
|-----------------------------|--|
| Immunogen: | ORC6 L antibody was raised in mouse using recombinant Human Origin Recognition Complex, Subunit 6 Like (Yeast) (Orc6) |
| Clone: | 2679C2b |
| Isotype: | IgG1 |
| Cross-Reactivity: | Human |
| Cross-Reactivity (Details): | Other species not studied. |
| Purification: | Protein G affinity chromatography |

Target Details

| | |
|-------------------|---|
| Target: | ORC6 |
| Alternative Name: | ORC6L (ORC6 Products) |

Target Details

Background: The origin recognition complex (ORC) is a highly conserved six subunit protein complex essential for the initiation of the DNA replication in eukaryotic cells. Studies in yeast demonstrated that ORC binds specifically to origins of replication and serves as a platform for the assembly of additional initiation factors such as Cdc6 and Mcm proteins. The protein encoded by this gene is a subunit of the ORC complex. It has been shown that this protein and ORC1L are loosely associated with the core complex consisting of ORC2L, -3L, -4L and -5L. Gene silencing studies with small interfering RNA demonstrated that this protein plays an essential role in coordinating chromosome replication and segregation with cytokinesis. Synonyms: Monoclonal ORC6L antibody, Anti-ORC6L antibody, Origin recognition complex subunit 6 antibody, ORC6 antibody.

Pathways: [Mitotic G1-G1/S Phases](#), [DNA Replication](#), [M Phase](#), [Synthesis of DNA](#)

Application Details

Application Notes: ICC: 2-100 µg/mL
Optimal conditions should be determined by the investigator.

Restrictions: For Research Use only

Handling

Concentration: Lot specific

Buffer: ORC6 L antibody in PBS (3.0 mM KCl, 1.5 mM KH₂ PO₄, 140 mM NaCl, 8.0 mM Na₂ HPO₄ (pH 7.4)) containing 1 % bovine serum albumin (BSA) and 0.05 % sodium azide (NaN₃).

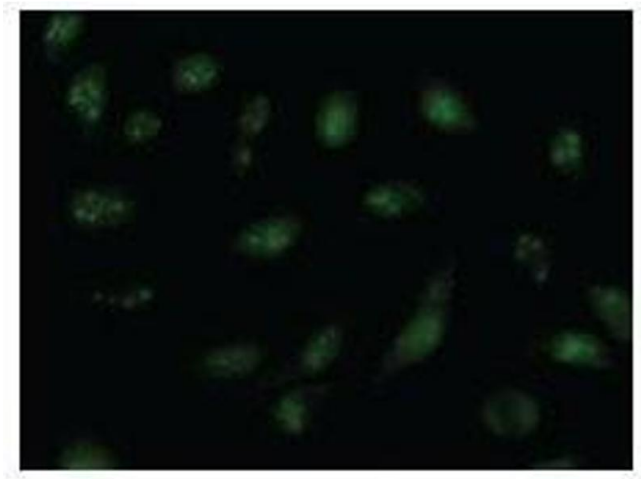
Preservative: Sodium azide

Precaution of Use: This product contains Sodium Azide: a POISONOUS AND HAZARDOUS SUBSTANCE, which should be handled by trained staff only.

Handling Advice: Avoid repeated freeze/thaw cycles.
Dilute only prior to immediate use.

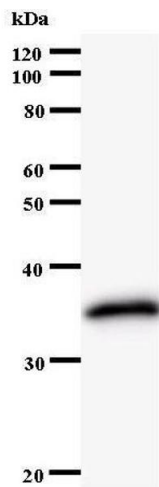
Storage: 4 °C/-20 °C

Storage Comment: Store at 2-8 °C for up to one year. We recommend long term storage at -20 °C.



Immunofluorescence

Image 1. Immunostaining analysis in HeLa cells. HeLa cells were fixed with 4% paraformaldehyde and permeabilized with 0.01% Triton-X100 in PBS. The cells were immunostained with anti-ORC6L antibody.



Western Blotting

Image 2.