

Datasheet for ABIN931183
anti-HAND2 antibody



[Go to Product page](#)

1 Image

Overview

Quantity:	100 µg
Target:	HAND2
Reactivity:	Human
Host:	Mouse
Clonality:	Monoclonal
Application:	Dot Blot (DB)

Product Details

Immunogen:	HAND2 antibody was raised in mouse using recombinant Human Heart And Neural Crest Derivatives Expressed 2 (Hand2)
Clone:	HAND2C1a
Isotype:	IgG1
Cross-Reactivity:	Human
Cross-Reactivity (Details):	Other species not studied.
Purification:	Protein G affinity chromatography

Target Details

Target:	HAND2
Alternative Name:	HAND2 (HAND2 Products)
Background:	The protein encoded by this gene belongs to the basic helix-loop-helix family of transcription

Target Details

factors. This gene product is one of two closely related family members, the HAND proteins, which are asymmetrically expressed in the developing ventricular chambers and play an essential role in cardiac morphogenesis. Working in a complementary fashion, they function in the formation of the right ventricle and aortic arch arteries, implicating them as mediators of congenital heart disease. In addition, this transcription factor plays an important role in limb and branchial arch development. Synonyms: Monoclonal HAND2 antibody, Anti-HAND2 antibody, Heart and neural crest derivatives expressed protein 2 antibody, Hed antibody, dHand antibody, DHAND2 antibody, Thing2 antibody, FLJ16260 antibody, MGC125303 antibody, MGC125304 antibody.

Pathways: [Tube Formation](#), [Feeding Behaviour](#)

Application Details

Application Notes: Optimal conditions should be determined by the investigator.

Restrictions: For Research Use only

Handling

Concentration: Lot specific

Buffer: Mouse monoclonal anti-humanHAND2 antibody in PBS (3.0 mM KCl, 1.5 mM KH₂PO₄, 140 mM NaCl, 8.0 mM Na₂HPO₄ (pH 7.4)) containing 1 % bovine serum albumin (BSA) and 0.05 % sodium azide (NaN₃).

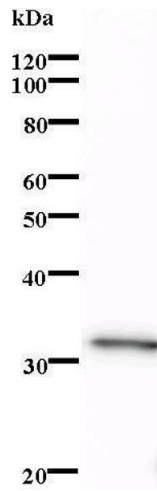
Preservative: Sodium azide

Precaution of Use: This product contains Sodium Azide: a POISONOUS AND HAZARDOUS SUBSTANCE, which should be handled by trained staff only.

Handling Advice: Avoid repeated freeze/thaw cycles.
Dilute only prior to immediate use.

Storage: 4 °C/-20 °C

Storage Comment: Store at 2-8 °C for up to one year. We recommend long term storage at -20 °C.



Western Blotting

Image 1.