

Datasheet for ABIN931188

anti-ELF2 antibody**1** Image[Go to Product page](#)

Overview

Quantity:	100 µg
Target:	ELF2
Reactivity:	Human
Host:	Mouse
Clonality:	Monoclonal
Conjugate:	This ELF2 antibody is un-conjugated
Application:	Dot Blot (DB)

Product Details

Immunogen:	ELF2 antibody was raised in mouse using recombinant Human E74-Like Factor 2 (Ets Domain Transcription Factor) (Elf2)
Clone:	224C4a
Isotype:	IgG1
Cross-Reactivity:	Human
Cross-Reactivity (Details):	Other species not studied.
Purification:	Protein G affinity chromatography

Target Details

Target:	ELF2
Alternative Name:	ELF2 (ELF2 Products)

Target Details

Background: Isoform 1 of this gene transcriptionally activates the LYN and BLK promoters and acts synergistically with RUNX1 to transactivate the BLK promoter, Isoform 2 may function in repression of RUNX1-mediated transactivation. Synonyms: Monoclonal ELF2 antibody, Anti-ELF2 antibody, E74-like factor 2 antibody, EU32 antibody, NERF antibody, NERF-2 antibody, NERF-1A antibody, NERF-1B antibody, b antibody.

Application Details

Application Notes: Optimal conditions should be determined by the investigator.

Restrictions: For Research Use only

Handling

Concentration: Lot specific

Buffer: ELF2 antibody in PBS (3.0 mM KCl, 1.5 mM KH₂ PO₄, 140 mM NaCl, 8.0 mM Na₂ HPO₄ (pH 7.4)) containing 1 % bovine serum albumin (BSA) and 0.05 % sodium azide (NaN₃).

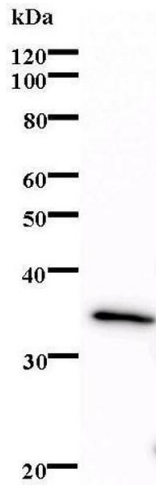
Preservative: Sodium azide

Precaution of Use: This product contains Sodium Azide: a POISONOUS AND HAZARDOUS SUBSTANCE, which should be handled by trained staff only.

Handling Advice: Avoid repeated freeze/thaw cycles.
Dilute only prior to immediate use.

Storage: 4 °C/-20 °C

Storage Comment: Store at 2-8 °C for up to one year. We recommend long term storage at -20 °C.



Western Blotting

Image 1.