

Datasheet for ABIN931190

**anti-TFEB antibody**[Go to Product page](#)**1** Image

## Overview

Quantity:	50 µg
Target:	TFEB
Reactivity:	Human
Host:	Mouse
Clonality:	Monoclonal
Conjugate:	This TFEB antibody is un-conjugated
Application:	Western Blotting (WB), Dot Blot (DB)

## Product Details

Immunogen:	TFEB antibody was raised in mouse using recombinant Human Transcription Factor Eb (Tfeb)
Clone:	319C2a
Isotype:	IgG1
Cross-Reactivity:	Human
Cross-Reactivity (Details):	Other species not studied.
Purification:	Protein G affinity chromatography

## Target Details

Target:	TFEB
Alternative Name:	TFEB ( <a href="#">TFEB Products</a> )
Background:	Transcription factor that specifically recognizes and binds E-box sequences (3'-CANNTG-5').

## Target Details

---

Efficient DNA-binding requires dimerization with itself or with another MiT/TFE family member such as TFE3 or MITF. In association with TFE3, activates the expression of CD40L in T-cells, thereby playing a role in T-cell-dependent antibody responses in activated CD4(+) T-cells and thymus-dependent humoral immunity. Specifically recognizes and binds the CLEAR-box sequence (5'-GTCACGTGAC-3') present in the regulatory region of many lysosomal genes, leading to activate their expression. It thereby plays a central role in expression of lysosomal genes. Specifically recognizes the gamma-E3 box, a subset of E-boxes, present in the heavy-chain immunoglobulin enhancer. Plays a role in the signal transduction processes required for normal vascularization of the placenta. Synonyms: Monoclonal TFEB antibody, Anti-TFEB antibody, Transcription factor EB antibody, TCFEB antibody, AlphaT antibody.

## Application Details

---

Application Notes: Optimal conditions should be determined by the investigator.

Restrictions: For Research Use only

## Handling

---

Concentration: Lot specific

Buffer: TFEB antibody in PBS (3.0 mM KCl, 1.5 mM KH<sub>2</sub> PO<sub>4</sub>, 140 mM NaCl, 8.0 mM Na<sub>2</sub> HPO<sub>4</sub> (pH 7.4)) containing 1 % bovine serum albumin (BSA) and 0.05 % sodium azide (NaN<sub>3</sub>).

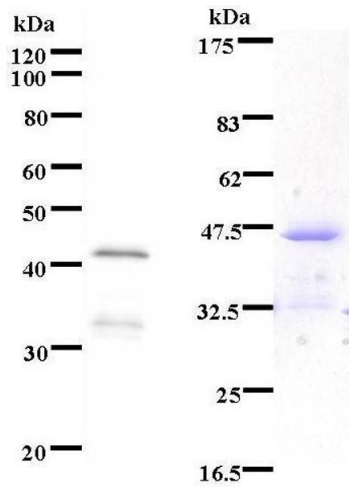
Preservative: Sodium azide

Precaution of Use: This product contains Sodium Azide: a POISONOUS AND HAZARDOUS SUBSTANCE, which should be handled by trained staff only.

Handling Advice: Avoid repeated freeze/thaw cycles.  
Dilute only prior to immediate use.

Storage: 4 °C/-20 °C

Storage Comment: Store at 2-8 °C for up to one year. We recommend long term storage at -20 °C.



### Western Blotting

**Image 1.** Left: RUNX3 staining. Right: Coomassie Blue staining of immunized recombinant protein.