

Datasheet for ABIN931195  
**anti-HIVEP2 antibody**



[Go to Product page](#)

1 Image

## Overview

Quantity:	100 µg
Target:	HIVEP2
Reactivity:	Human
Host:	Mouse
Clonality:	Monoclonal
Conjugate:	This HIVEP2 antibody is un-conjugated
Application:	Dot Blot (DB)

## Product Details

Immunogen:	HIVEP2 antibody was raised in mouse using recombinant Human Human Immunodeficiency Virus Type I Enhancer Binding Protein 2 (Hivep2)
Clone:	2418C2a
Isotype:	IgG1
Cross-Reactivity:	Human
Cross-Reactivity (Details):	Other species not studied.
Purification:	Protein G affinity chromatography

## Target Details

Target:	HIVEP2
Alternative Name:	HIVEP2 ( <a href="#">HIVEP2 Products</a> )

## Target Details

---

Target Type:	Virus
Background:	Members of the ZAS family, such as ZAS2 (HIVEP2), are large proteins that contain a ZAS domain, a modular protein structure consisting of a pair of C2H2 zinc fingers with an acidic-rich region and a serine/threonine-rich sequence. These proteins bind specific DNA sequences, including the kappa-B motif (GGGACTTTCC), in the promoters and enhancer regions of several genes and viruses, including human immunodeficiency virus (HIV). ZAS genes span more than 150 kb and contain at least 10 exons, one of which is longer than 5.5 kb. Synonyms: Monoclonal HIVEP2 antibody, Anti-HIVEP2 antibody, Human immunodeficiency virus type I enhancer-binding protein 2 antibody, MBP-2 antibody, MIBP1 antibody, HIV-EP2 antibody.

## Application Details

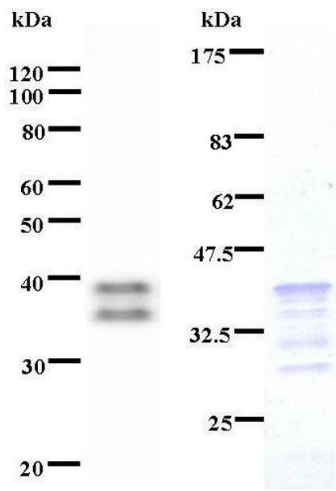
---

Application Notes:	Optimal conditions should be determined by the investigator.
Restrictions:	For Research Use only

## Handling

---

Concentration:	Lot specific
Buffer:	HIVEP2 antibody in PBS (3.0 mM KCl, 1.5 mM KH <sub>2</sub> PO <sub>4</sub> , 140 mM NaCl, 8.0 mM Na <sub>2</sub> HPO <sub>4</sub> (pH 7.4)) containing 1 % bovine serum albumin (BSA) and 0.05 % sodium azide (NaN <sub>3</sub> ).
Preservative:	Sodium azide
Precaution of Use:	This product contains Sodium Azide: a POISONOUS AND HAZARDOUS SUBSTANCE, which should be handled by trained staff only.
Handling Advice:	Avoid repeated freeze/thaw cycles. Dilute only prior to immediate use.
Storage:	4 °C/-20 °C
Storage Comment:	Store at 2-8 °C for up to one year. We recommend long term storage at -20 °C.



### Western Blotting

**Image 1.** Left: HIVEP2 staining. Right: Coomassie Blue staining of immunized recombinant protein.