

Datasheet for ABIN931200
anti-ALX1 antibody



[Go to Product page](#)

1 Image

Overview

Quantity:	50 µg
Target:	ALX1
Reactivity:	Human
Host:	Mouse
Clonality:	Monoclonal
Conjugate:	This ALX1 antibody is un-conjugated
Application:	Dot Blot (DB)

Product Details

Immunogen:	CART1 antibody was raised in mouse using recombinant Human Cartilage Paired-Class Homeoprotein 1 (Cart1)
Clone:	3329D3a
Isotype:	IgG1
Cross-Reactivity:	Human
Cross-Reactivity (Details):	Other species not studied.
Purification:	Protein G affinity chromatography

Target Details

Target:	ALX1
Alternative Name:	CART1 (ALX1 Products)

Target Details

Background: The specific function of this gene has yet to be determined in humans, however, in rodents, it is necessary for survival of the forebrain mesenchyme and may also be involved in development of the cervix. Mutations in the mouse gene lead to neural tube defects such as acrania and meroanencephaly. Synonyms: Monoclonal CART1 antibody, Anti-CART1 antibody, Cartilage homeoprotein 1 antibody.

Pathways: [Tube Formation](#)

Application Details

Application Notes: Optimal conditions should be determined by the investigator.

Restrictions: For Research Use only

Handling

Concentration: Lot specific

Buffer: CART1 antibody in PBS (3.0 mM KCl, 1.5 mM KH₂ PO₄, 140 mM NaCl, 8.0 mM Na₂ HPO₄ (pH 7.4)) containing 1 % bovine serum albumin (BSA) and 0.05 % sodium azide (NaN₃).

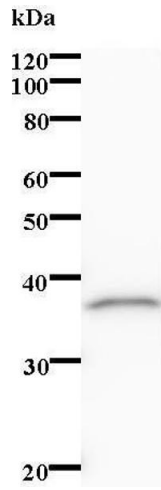
Preservative: Sodium azide

Precaution of Use: This product contains Sodium Azide: a POISONOUS AND HAZARDOUS SUBSTANCE, which should be handled by trained staff only.

Handling Advice: Avoid repeated freeze/thaw cycles.
Dilute only prior to immediate use.

Storage: 4 °C/-20 °C

Storage Comment: Store at 2-8 °C for up to one year. We recommend long term storage at -20 °C.



Western Blotting

Image 1.