

Datasheet for ABIN931203
anti-KIF22 antibody

2 Images



[Go to Product page](#)

Overview

Quantity:	100 µg
Target:	KIF22
Reactivity:	Human
Host:	Mouse
Clonality:	Monoclonal
Conjugate:	This KIF22 antibody is un-conjugated
Application:	Western Blotting (WB), Dot Blot (DB), Immunocytochemistry (ICC)

Product Details

Immunogen:	KIF22 antibody was raised in mouse using recombinant Human Kinesin Family Member 22 (Kif22)
Clone:	2486C3a
Isotype:	IgG1
Cross-Reactivity:	Human
Cross-Reactivity (Details):	Other species not studied.
Purification:	Protein G affinity chromatography

Target Details

Target:	KIF22
Alternative Name:	KIF22 (KIF22 Products)

Target Details

Background: The protein encoded by this gene is a member of kinesin-like protein family. This family of proteins are microtubuledependent molecular motors that transport organelles within cells and move chromosomes during cell division. The Cterminal half of this protein has been shown to bind DNA. Studies with the Xenopus homolog suggests its essential role in metaphase chromosome alignment and maintenance. Synonyms: Monoclonal KIF22 antibody, Anti-KIF22 antibody, Kinesin family member 22 antibody, KID antibody, OBP antibody, KNLS4 antibody, OBP-1 antibody, OBP-2 antibody.

Application Details

Application Notes: WB: 0.2-2 µg/mL
Optimal conditions should be determined by the investigator.

Restrictions: For Research Use only

Handling

Concentration: Lot specific

Buffer: KIF22 antibody in PBS (3.0 mM KCl, 1.5 mM KH₂ PO₄, 140 mM NaCl, 8.0 mM Na₂ HPO₄ (pH 7.4)) containing 1 % bovine serum albumin (BSA) and 0.05 % sodium azide (NaN₃).

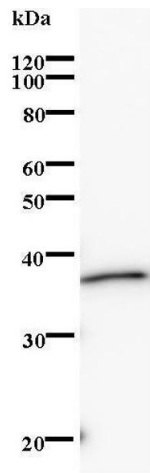
Preservative: Sodium azide

Precaution of Use: This product contains Sodium Azide: a POISONOUS AND HAZARDOUS SUBSTANCE, which should be handled by trained staff only.

Handling Advice: Avoid repeated freeze/thaw cycles.
Dilute only prior to immediate use.

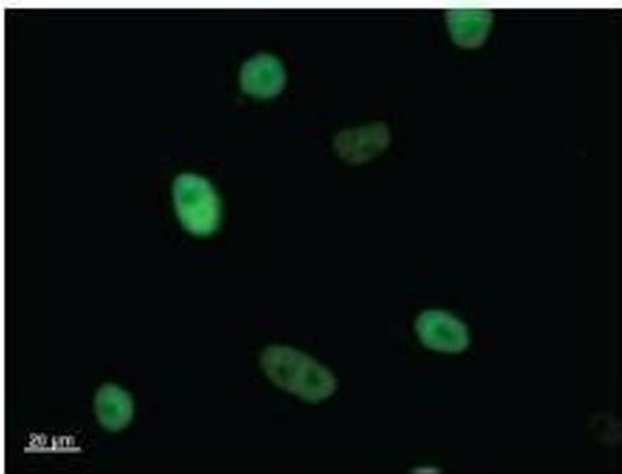
Storage: 4 °C/-20 °C

Storage Comment: Store at 2-8 °C for up to one year. We recommend long term storage at -20 °C.



Western Blotting

Image 1.



Immunofluorescence

Image 2. Immunostaining analysis in HeLa cells. HeLa cells were fixed with 4% paraformaldehyde and permeabilized with 0.01% Triton-X100 in PBS. The cells were immunostained with anti-KIF22 antibody.