

Datasheet for ABIN931204 **anti-PHF1 antibody**

1 Image



[Go to Product page](#)

Overview

Quantity:	100 µg
Target:	PHF1
Reactivity:	Human
Host:	Mouse
Clonality:	Monoclonal
Conjugate:	This PHF1 antibody is un-conjugated
Application:	Dot Blot (DB)

Product Details

Immunogen:	PHF1 antibody was raised in mouse using recombinant Human Phd Finger 1 (Phf1)
Clone:	864C6a
Isotype:	IgG1
Cross-Reactivity:	Human
Cross-Reactivity (Details):	Other species not studied.
Purification:	Protein G affinity chromatography

Target Details

Target:	PHF1
Alternative Name:	PHF1 (PHF1 Products)
Background:	This gene encodes a Polycomb group protein. The protein is a component of a histone H3

Target Details

lysine-27 (H3K27)-specific methyltransferase complex, and functions in transcriptional repression of homeotic genes. The protein is also recruited to double-strand breaks, and reduced protein levels results in X-ray sensitivity and increased homologous recombination. Multiple transcript variants encoding different isoforms have been found for this gene. Synonyms: Monoclonal PHF1 antibody, Anti-PHF1 antibody, PHD finger protein 1.

Application Details

Application Notes: Optimal conditions should be determined by the investigator.

Restrictions: For Research Use only

Handling

Concentration: Lot specific

Buffer: PHF1 antibody in PBS (3.0 mM KCl, 1.5 mM KH₂ PO₄, 140 mM NaCl, 8.0 mM Na₂ HPO₄ (pH 7.4)) containing 1 % bovine serum albumin (BSA) and 0.05 % sodium azide (NaN₃).

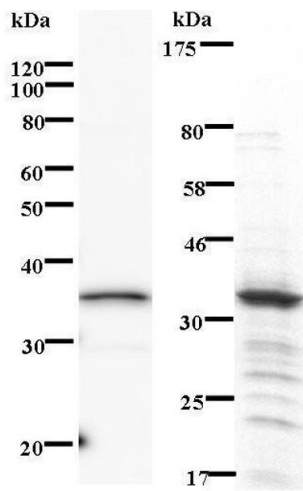
Preservative: Sodium azide

Precaution of Use: This product contains Sodium Azide: a POISONOUS AND HAZARDOUS SUBSTANCE, which should be handled by trained staff only.

Handling Advice: Avoid repeated freeze/thaw cycles.
Dilute only prior to immediate use.

Storage: 4 °C/-20 °C

Storage Comment: Store at 2-8 °C for up to one year. We recommend long term storage at -20 °C.



Western Blotting

Image 1. Left: PHF1 staining. Right: Coomassie Blue staining of immunized recombinant protein.