

Datasheet for ABIN931229
anti-STAMBPL1 antibody



[Go to Product page](#)

1 Image

Overview

Quantity:	50 µg
Target:	STAMBPL1
Reactivity:	Human
Host:	Mouse
Clonality:	Monoclonal
Conjugate:	This STAMBPL1 antibody is un-conjugated
Application:	Immunocytochemistry (ICC), Dot Blot (DB)

Product Details

Immunogen:	STAMBPL1 antibody was raised in mouse using recombinant Human Stam Binding Protein-Like 1 (Stambpl1)
Clone:	2020C4a
Isotype:	IgG1
Cross-Reactivity:	Human
Cross-Reactivity (Details):	Other species not studied.
Purification:	Protein G affinity chromatography

Target Details

Target:	STAMBPL1
Alternative Name:	STAMBPL1 (STAMBPL1 Products)

Target Details

Background: This gene encodes a zinc metalloprotease that specifically cleaves 'Lys-63'-linked polyubiquitin chains. It does not cleave 'Lys-48'-linked polyubiquitin chains. Synonyms: Monoclonal STAMBPL1 antibody, Anti-STAMBPL1 antibody, STAM binding protein like 1 antibody, AMSH-FP antibody, AMSH-LP antibody, ALMalpha antibody, FLJ31524 antibody, KIAA1373 antibody, bA399019.2 antibody.

Application Details

Application Notes: Optimal conditions should be determined by the investigator.

Restrictions: For Research Use only

Handling

Concentration: Lot specific

Buffer: STAMBPL1 antibody in PBS (3.0 mM KCl, 1.5 mM KH₂ PO₄, 140 mM NaCl, 8.0 mM Na₂ HPO₄ (pH 7.4)) containing 1 % bovine serum albumin (BSA) and 0.05 % sodium azide (NaN₃).

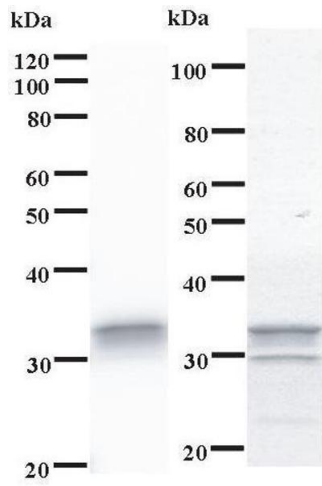
Preservative: Sodium azide

Precaution of Use: This product contains Sodium Azide: a POISONOUS AND HAZARDOUS SUBSTANCE, which should be handled by trained staff only.

Handling Advice: Avoid repeated freeze/thaw cycles.
Dilute only prior to immediate use.

Storage: 4 °C/-20 °C

Storage Comment: Store at 2-8 °C for up to one year. We recommend long term storage at -20 °C.



Western Blotting

Image 1. Left: STAMBPL1 staining. Right: Coomassie Blue staining of immunized recombinant protein.