

Datasheet for ABIN931236
anti-CCNB1IP1 antibody



[Go to Product page](#)

1 Image

Overview

Quantity:	100 µg
Target:	CCNB1IP1
Reactivity:	Human
Host:	Mouse
Clonality:	Monoclonal
Conjugate:	This CCNB1IP1 antibody is un-conjugated
Application:	Immunocytochemistry (ICC), Dot Blot (DB)

Product Details

Immunogen:	CCNB1 IP1 antibody was raised in mouse using recombinant Human Cyclin B1 Interacting Protein 1 (Ccnb1 p1)
Clone:	2114C2a
Isotype:	IgG1
Cross-Reactivity:	Human
Cross-Reactivity (Details):	Other species not studied.
Purification:	Protein G affinity chromatography

Target Details

Target:	CCNB1IP1
Alternative Name:	CCNB1IP1 (CCNB1IP1 Products)

Target Details

Background: E3 ubiquitin-protein ligase CCNB1IP1 is an enzyme that in humans is encoded by the CCNB1IP1 gene. HEI10 is a member of the E3 ubiquitin ligase family and functions in progression of the cell cycle through G(2)/M. Synonyms: Monoclonal CCNB1IP1 antibody, Anti-CCNB1IP1 antibody, Cyclin B1 interacting protein 1 antibody, variant 1 antibody, mRNA antibody.

Application Details

Application Notes: Optimal conditions should be determined by the investigator.

Restrictions: For Research Use only

Handling

Concentration: Lot specific

Buffer: CCNB1 IP1 antibody in PBS (3.0 mM KCl, 1.5 mM KH₂ PO₄, 140 mM NaCl, 8.0 mM Na₂ HPO₄ (pH 7.4)) containing 1 % bovine serum albumin (BSA) and 0.05 % sodium azide (NaN₃).

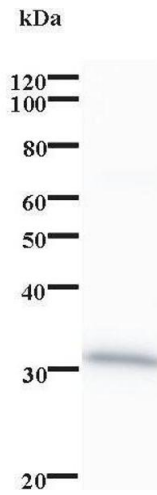
Preservative: Sodium azide

Precaution of Use: This product contains Sodium Azide: a POISONOUS AND HAZARDOUS SUBSTANCE, which should be handled by trained staff only.

Handling Advice: Avoid repeated freeze/thaw cycles.
Dilute only prior to immediate use.

Storage: 4 °C/-20 °C

Storage Comment: Store at 2-8 °C for up to one year. We recommend long term storage at -20 °C.



Western Blotting

Image 1.