

Datasheet for ABIN931286 **anti-Mps1 antibody**



[Go to Product page](#)

1 Image

Overview

Quantity:	100 µL
Target:	Mps1 (TTK)
Reactivity:	Human
Host:	Mouse
Clonality:	Monoclonal
Conjugate:	This Mps1 antibody is un-conjugated
Application:	ELISA, Immunofluorescence (IF)

Product Details

Immunogen:	MPS1 antibody was raised in Mouse using a purified recombinant fragment of MPS1 expressed in E. coli as the immunogen.
Clone:	7E3
Isotype:	IgG1

Target Details

Target:	Mps1 (TTK)
Alternative Name:	MPS1 (TTK Products)
Background:	MPS1 belongs to the S27E family of ribosomal proteins. It contains a C4-type zinc finger domain that can bind to zinc and has been shown to be able to bind to nucleic acid. It is located in the cytoplasm as a ribosomal component, but it has also been detected in the nucleus. MPS1 is expressed in a wide variety of actively proliferating cells and tumor tissues. Synonyms:

Target Details

Monoclonal MPS1 antibody, Anti-MPS1 antibody, RPS27 antibody.

Application Details

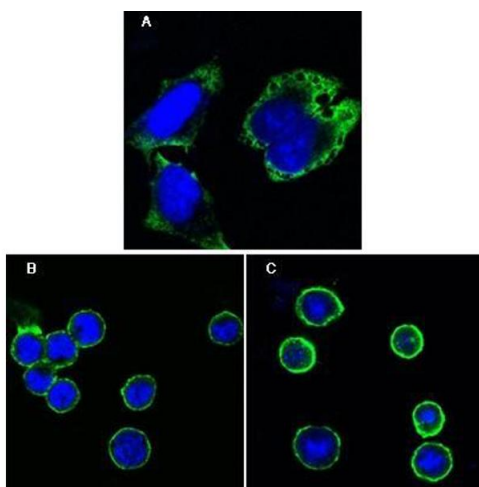
Application Notes: ELISA: 1:10,000, IF: 1:200-1:1000
Optimal conditions should be determined by the investigator.

Restrictions: For Research Use only

Handling

Format:	Liquid
Concentration:	Lot specific
Buffer:	Supplied as a liquid in ascitic fluid containing 0.03 % sodium azide.
Preservative:	Sodium azide
Precaution of Use:	This product contains Sodium Azide: a POISONOUS AND HAZARDOUS SUBSTANCE, which should be handled by trained staff only.
Handling Advice:	Avoid repeated freeze/thaw cycles. Dilute only prior to immediate use.
Storage:	4 °C/-20 °C
Storage Comment:	Store at 4 °C for short term storage. Store at -20 °C for long term storage.

Images



Immunofluorescence

Image 1. Confocal immunofluorescence analysis of HeLa cells (A), BCBL-1 cells (B) and L1210 cells (C) using MPS1 antibody (green). Blue: DRAQ5 fluorescent DNA dye.