

Datasheet for ABIN931287

**anti-REG1A antibody****2** Images[Go to Product page](#)

## Overview

Quantity:	100 µL
Target:	REG1A
Reactivity:	Human
Host:	Mouse
Clonality:	Monoclonal
Conjugate:	This REG1A antibody is un-conjugated
Application:	ELISA, Immunofluorescence (IF)

## Product Details

Immunogen:	REG1A antibody was raised in Mouse using a purified recombinant fragment of human REG1A fused with hlgGfc tag expressed in HEK293 cell line as the immunogen.
Clone:	1A4
Isotype:	IgG1

## Target Details

Target:	REG1A
Alternative Name:	REG1A ( <a href="#">REG1A Products</a> )

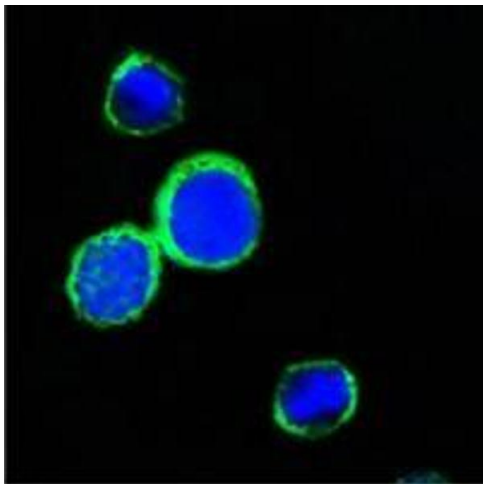
## Application Details

Application Notes:	ELISA: 1:10,000, IF: 1:200-1:1000
Restrictions:	For Research Use only

## Handling

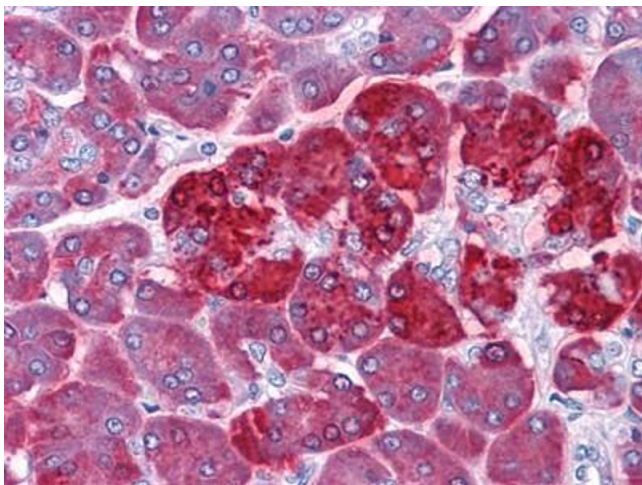
Format:	Liquid
Concentration:	Lot specific
Buffer:	as a liquid In ascitic fluid containing 0.03 % sodium azide.
Preservative:	Sodium azide
Precaution of Use:	This product contains Sodium azide: a POISONOUS AND HAZARDOUS SUBSTANCE which should be handled by trained staff only.
Handling Advice:	Avoid repeated freeze/thaw cycles
Storage:	-20 °C
Storage Comment:	Store at 4 °C for short term storage. Store at -20 °C for long term storage.

## Images



### Immunofluorescence

**Image 1.** Confocal immunofluorescence analysis of PC12 cells using REG1A antibody (green). Blue: DRAQ5 fluorescent DNA dye.



### Immunohistochemistry

**Image 2.** Immunohistochemical analysis of paraffin-embedded human Pancreas tissues using REG1A antibody