

Datasheet for ABIN931329
anti-CLOCK antibody



[Go to Product page](#)

2 Images

Overview

Quantity:	100 µL
Target:	CLOCK
Reactivity:	Human
Host:	Mouse
Clonality:	Monoclonal
Conjugate:	This CLOCK antibody is un-conjugated
Application:	Western Blotting (WB), ELISA, Flow Cytometry (FACS)

Product Details

Immunogen:	CLOCK antibody was raised in Mouse using a purified recombinant fragment of human CLOCK expressed in E. coli as the immunogen.
Clone:	8F7
Isotype:	IgG1

Target Details

Target:	CLOCK
Alternative Name:	CLOCK (CLOCK Products)
Pathways:	Regulation of Lipid Metabolism by PPARalpha , Photoperiodism

Application Details

Application Notes: ELISA: 1:10,000, FC: 1:200-1:400, WB: 1:500-1:2000,

Restrictions: For Research Use only

Handling

Format: Liquid

Concentration: Lot specific

Buffer: as a liquid In ascitic fluid containing 0.03 % sodium azide.

Preservative: Sodium azide

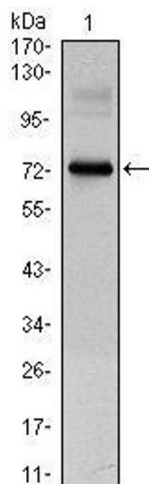
Precaution of Use: This product contains Sodium azide: a POISONOUS AND HAZARDOUS SUBSTANCE which should be handled by trained staff only.

Handling Advice: Avoid repeated freeze/thaw cycles

Storage: -20 °C

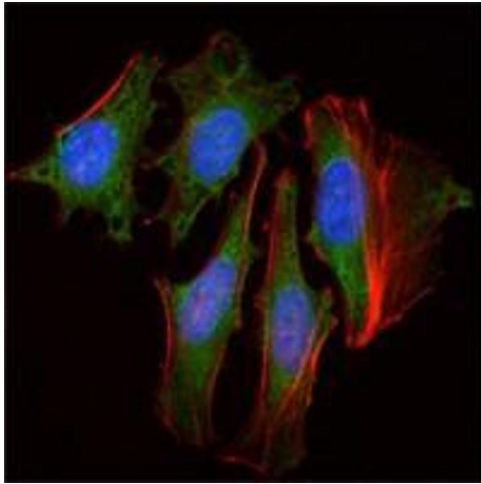
Storage Comment: Store at 4 °C for short term storage. Store at -20 °C for long term storage.

Images



Western Blotting

Image 1. Western Blot showing CLOCK antibody used against CLOCK (AA: 200-465)-hIgGfc transfected HEK293 cell lysate.



Immunofluorescence

Image 2. Immunofluorescence analysis of HeLa cells using CLOCK antibody (green). Red: Actin filaments have been labeled with Alexa Fluor-555 phalloidin. Blue: DRAQ5 fluorescent DNA dye.