

## Datasheet for ABIN931343 **anti-ABL2 antibody**

### 2 Images



[Go to Product page](#)

### Overview

Quantity:	100 µL
Target:	ABL2
Reactivity:	Human
Host:	Mouse
Clonality:	Monoclonal
Conjugate:	This ABL2 antibody is un-conjugated
Application:	Western Blotting (WB), ELISA, Immunofluorescence (IF)

### Product Details

Immunogen:	ABL2 antibody was raised in Mouse using a purified recombinant fragment of ABL2 expressed in E. coli as the immunogen.
Clone:	1H1B11
Isotype:	IgG1

### Target Details

Target:	ABL2
Alternative Name:	<a href="#">ABL2 (ABL2 Products)</a>
Background:	ABL2 is a cytoplasmic tyrosine kinase which is closely related to but distinct from ABL1. The similarity of the proteins includes the tyrosine kinase domains and extends amino-terminal to include the SH2 and SH3 domains. ABL2 is expressed in both normal and tumor cells. The ABL2 gene product is expressed as two variants bearing different amino termini, both

## Target Details

---

approximately 12-kb in length. c-Abl shows both cytoplasmic and nuclear localization, c-Abl is involved in two different chromosomal translocations present in human leukemias, which generate Bcr-Abl and TEL-Abl. Synonyms: Monoclonal ABL2 antibody, Anti-ABL2 antibody, ARG antibody, Abelson-related gene antibody.

## Application Details

---

Application Notes: ELISA: 1:10,000, IF: 1:200-1:1000, WB: 1:500-1:2000  
Optimal conditions should be determined by the investigator.

Restrictions: For Research Use only

## Handling

---

Format: Liquid

Concentration: Lot specific

Buffer: Supplied as a liquid in ascitic fluid containing 0.03 % sodium azide.

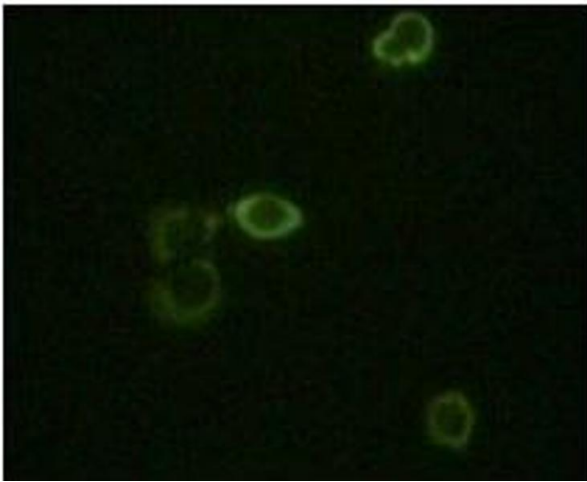
Preservative: Sodium azide

Precaution of Use: This product contains Sodium Azide: a POISONOUS AND HAZARDOUS SUBSTANCE, which should be handled by trained staff only.

Handling Advice: Avoid repeated freeze/thaw cycles.  
Dilute only prior to immediate use.

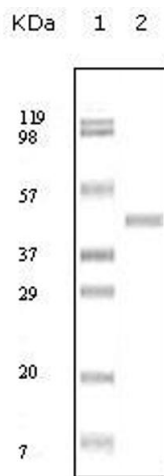
Storage: 4 °C/-20 °C

Storage Comment: Store at 4 °C for short term storage. Store at -20 °C for long term storage.



### Immunofluorescence

**Image 1.** Immunofluorescence staining of methanol-fixed HeLa cells using ABL2 antibody showing cytoplasm localization.



### Western Blotting

**Image 2.** Western Blot showing ABL2 antibody used against truncated ABL2 recombinant protein.