

Datasheet for ABIN931367
anti-SORL1 antibody (AA 2159-2214)



[Go to Product page](#)

1 Image

Overview

Quantity:	100 µL
Target:	SORL1
Binding Specificity:	AA 2159-2214
Reactivity:	Human
Host:	Mouse
Clonality:	Monoclonal
Conjugate:	This SORL1 antibody is un-conjugated
Application:	ELISA, Western Blotting (WB)

Product Details

Immunogen:	SORL1 antibody was raised in Mouse using a purified recombinant fragment of SORL1(aa2159-2214) expressed in E. coli as the immunogen.
Clone:	7D7B11
Isotype:	IgG1

Target Details

Target:	SORL1
Alternative Name:	SORL1 (SORL1 Products)
Background:	SORL1 is a Type I membrane protein that may be involved in cell-cell interaction. SorLA, a single transmembrane receptor, binds LDL and transports it into cells by endocytosis. SorLA is synthesized as a proreceptor which is processed to the mature form by a furin-like

Target Details

propeptidase. It can also bind to RAP (receptor-associated protein). SorLA is a multifunctional endocytosis receptor important in lipoprotein and protease uptake. The N-terminal propeptide, which is removed, can be cleaved by furin or homologous proteases. Endogenous SorLA binds the neuropeptide head activator (HA) and is important for HA signaling and function.

Synonyms: Monoclonal SORL1 antibody, Anti-SORL1 antibody, Sortilin related receptor L A repeats containing antibody.

Pathways: [Smooth Muscle Cell Migration](#)

Application Details

Application Notes: ELISA: 1:10,000, WB: 1:500-1:2000
Optimal conditions should be determined by the investigator.

Restrictions: For Research Use only

Handling

Format: Liquid

Concentration: Lot specific

Buffer: Supplied as a liquid in ascitic fluid containing 0.03 % sodium azide.

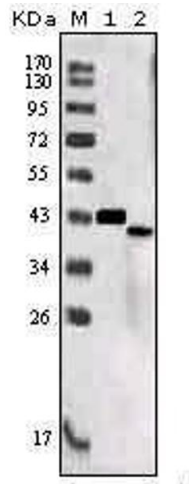
Preservative: Sodium azide

Precaution of Use: This product contains Sodium Azide: a POISONOUS AND HAZARDOUS SUBSTANCE, which should be handled by trained staff only.

Handling Advice: Avoid repeated freeze/thaw cycles.
Dilute only prior to immediate use.

Storage: 4 °C/-20 °C

Storage Comment: Store at 4 °C for short term storage. Store at -20 °C for long term storage.



Western Blotting

Image 1. Western Blot showing SORL1 antibody used against truncated SORL1 recombinant protein (1) and SORL1 (aa2159-2214)-hlgGfc transfected CHO-K1 cell lysate (2).