

Datasheet for ABIN931438
anti-Mammaglobin A antibody (AA 1-193)



[Go to Product page](#)

1 Image

Overview

Quantity:	100 µL
Target:	Mammaglobin A (SCGB2A2)
Binding Specificity:	AA 1-193
Reactivity:	Human
Host:	Mouse
Clonality:	Monoclonal
Application:	Western Blotting (WB), ELISA

Product Details

Immunogen:	Mammaglobin 1 antibody was raised in Mouse using a purified recombinant fragment of SCGB2 A2(aa1-193) expressed in E. coli as the immunogen.
Clone:	1G8D6-2E7G9
Isotype:	IgG1

Target Details

Target:	Mammaglobin A (SCGB2A2)
Alternative Name:	Mammaglobin 1 (SCGB2A2 Products)
Background:	Mammaglobin is a gene that is expressed almost exclusively in the normal breast epithelium and human breast cancer. It is a member of the secretoglobulin gene family and forms a heterodimer with lipophilin B. It has been suggested that mammaglobin may be a useful marker for breast cancer clinical research. Studies investigating the detection of mRNA by RT PCR

Target Details

from circulating carcinoma cells in the peripheral blood of breast cancer patients have shown that mammaglobin is a highly specific marker and correlates with several prognostic factors, such as lymph node involvement. Synonyms: Monoclonal Mammaglobin 1 antibody, Anti-Mammaglobin 1 antibody, Mammaglobin antibody.

Application Details

Application Notes: ELISA: 1:10,000, WB: 1:500-1:2000
Optimal conditions should be determined by the investigator.

Restrictions: For Research Use only

Handling

Format: Liquid

Concentration: Lot specific

Buffer: Supplied as a liquid in ascitic fluid containing 0.03 % sodium azide.

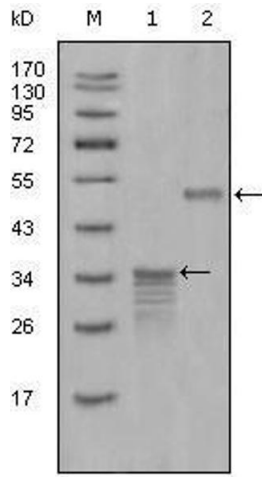
Preservative: Sodium azide

Precaution of Use: This product contains Sodium Azide: a POISONOUS AND HAZARDOUS SUBSTANCE, which should be handled by trained staff only.

Handling Advice: Avoid repeated freeze/thaw cycles.
Dilute only prior to immediate use.

Storage: 4 °C/-20 °C

Storage Comment: Store at 4 °C for short term storage. Store at -20 °C for long term storage.



Western Blotting

Image 1. Western Blot showing Mammaglobin-1 antibody used against full-length GST- Mammaglobin-1 (1) and full-length MBP- Mammaglobin-1 (aa1-193) recombinant protein (2).