

Datasheet for ABIN931511
anti-HAS1 antibody

2 Images



[Go to Product page](#)

Overview

Quantity:	100 µL
Target:	HAS1
Reactivity:	Human
Host:	Mouse
Clonality:	Monoclonal
Conjugate:	This HAS1 antibody is un-conjugated
Application:	Western Blotting (WB), ELISA, Immunohistochemistry (IHC), Immunofluorescence (IF)

Product Details

Immunogen:	HAS1 antibody was raised in Mouse using a purified recombinant fragment of human HAS1 expressed in E. coli as the immunogen.
Clone:	3E10
Isotype:	IgG1

Target Details

Target:	HAS1
Alternative Name:	HAS1 (HAS1 Products)
Pathways:	Glycosaminoglycan Metabolic Process

Application Details

Application Notes: ELISA: 1:10,000, IF: 1:200-1:1000, IHC: 1:200-1:1000, WB: 1:500-1:2000

Restrictions: For Research Use only

Handling

Format: Liquid

Concentration: Lot specific

Buffer: as a liquid In ascitic fluid containing 0.03 % sodium azide.

Preservative: Sodium azide

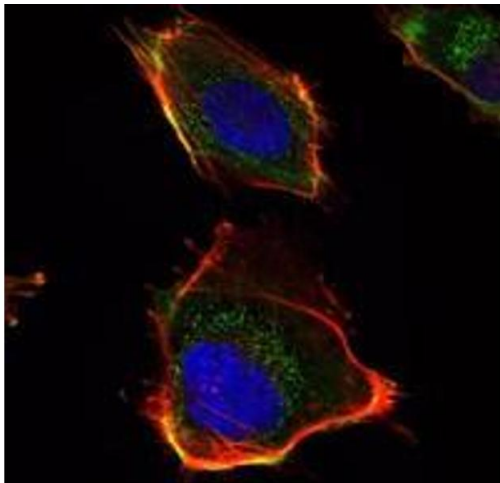
Precaution of Use: This product contains Sodium azide: a POISONOUS AND HAZARDOUS SUBSTANCE which should be handled by trained staff only.

Handling Advice: Avoid repeated freeze/thaw cycles

Storage: -20 °C

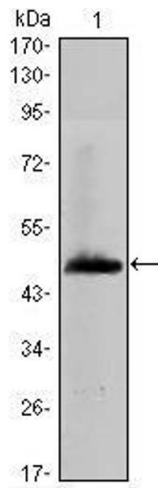
Storage Comment: Store at 4 °C for short term storage. Store at -20 °C for long term storage.

Images



Immunofluorescence

Image 1. Immunofluorescence analysis of U251 cells using HAS1 antibody (green). Red: Actin filaments have been labeled with DY-554 phalloidin. Blue: DRAQ5 fluorescent DNA dye.



Western Blotting

Image 2. Western Blot showing HAS1 antibody used against human HAS1 (AA: 74-243) recombinant protein. (Expected MW is 44.4 kDa)