

Datasheet for ABIN931528

anti-TAB2 antibody**2** Images[Go to Product page](#)

Overview

Quantity:	100 µL
Target:	TAB2
Reactivity:	Human
Host:	Mouse
Clonality:	Monoclonal
Conjugate:	This TAB2 antibody is un-conjugated
Application:	Western Blotting (WB), ELISA, Immunofluorescence (IF)

Product Details

Immunogen:	TAB2 antibody was raised in Mouse using a purified recombinant fragment of human TAB2 expressed in E. coli as the immunogen.
Clone:	3B5
Isotype:	IgG1

Target Details

Target:	TAB2
Alternative Name:	TAB2 (TAB2 Products)
Pathways:	TCR Signaling , TLR Signaling , Fc-epsilon Receptor Signaling Pathway , Activation of Innate immune Response , Toll-Like Receptors Cascades , Ubiquitin Proteasome Pathway

Application Details

Application Notes: ELISA: 1:10,000, IF: 1:200-1:1000, WB: 1:500-1:2000

Restrictions: For Research Use only

Handling

Format: Liquid

Concentration: Lot specific

Buffer: as a liquid In ascitic fluid containing 0.03 % sodium azide.

Preservative: Sodium azide

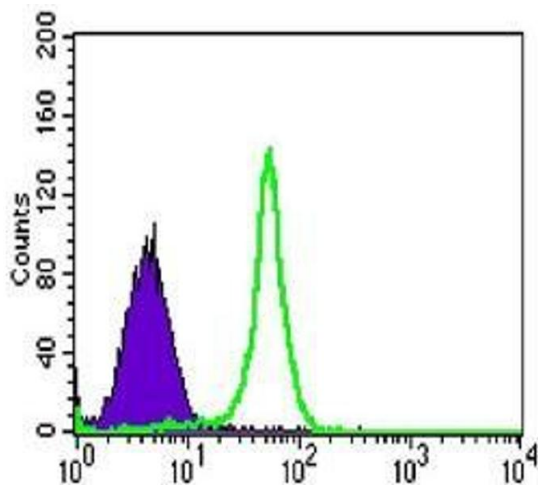
Precaution of Use: This product contains Sodium azide: a POISONOUS AND HAZARDOUS SUBSTANCE which should be handled by trained staff only.

Handling Advice: Avoid repeated freeze/thaw cycles

Storage: -20 °C

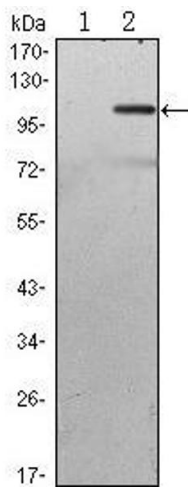
Storage Comment: Store at 4 °C for short term storage. Store at -20 °C for long term storage.

Images



Flow Cytometry

Image 1. FC analysis of HL-60 cells using TAB2 antibody (green) and negative control (purple).



Western Blotting

Image 2. Western Blot showing TAB2 antibody used against HEK293 (1) and TAB2 (AA: 1-300)-hIgGFc transfected HEK293 (2) cell lysate.