

Datasheet for ABIN931812 **anti-CISD1 antibody**

3 Images



[Go to Product page](#)

Overview

Quantity:	100 µL
Target:	CISD1
Reactivity:	Human
Host:	Mouse
Clonality:	Monoclonal
Conjugate:	This CISD1 antibody is un-conjugated
Application:	Western Blotting (WB), Immunofluorescence (IF), Flow Cytometry (FACS)

Product Details

Immunogen:	CISD1 antibody was raised in mouse using a full length recombinant protein of human CISD1 (NP_060934) produced in HEK293T cells, as the immunogen.
Clone:	2B3
Isotype:	IgG1
Purification:	CISD1 antibody was purified by affinity chromatography.

Target Details

Target:	CISD1
Alternative Name:	CISD1 (CISD1 Products)

Application Details

Application Notes: IF: 1:100, FC: 1:100, WB: 1:500

Restrictions: For Research Use only

Handling

Format: Liquid

Concentration: Lot specific

Buffer: In PBS buffer, pH 7.3, containing 1 % BSA, 50 % glycerol and 0.02 % sodium azide.

Preservative: Sodium azide

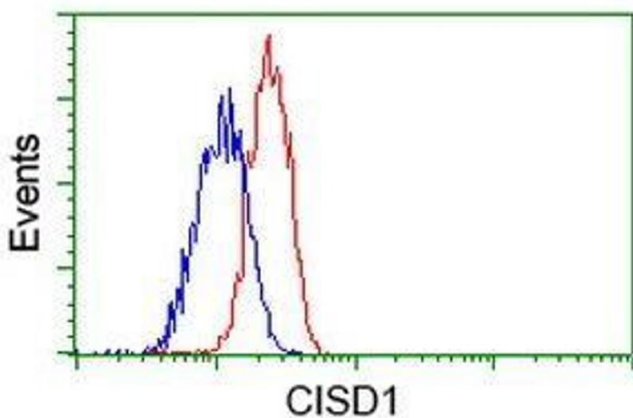
Precaution of Use: This product contains Sodium azide: a POISONOUS AND HAZARDOUS SUBSTANCE which should be handled by trained staff only.

Handling Advice: Avoid repeated freeze/thaw cycles

Storage: -20 °C

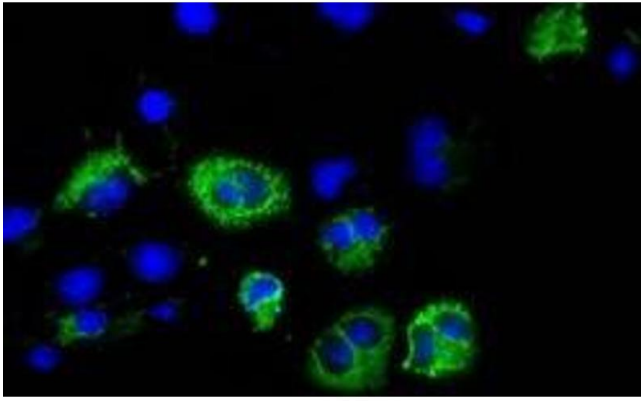
Storage Comment: Store at 4 °C for short term storage. Aliquot and store at -20 °C for long term storage.

Images



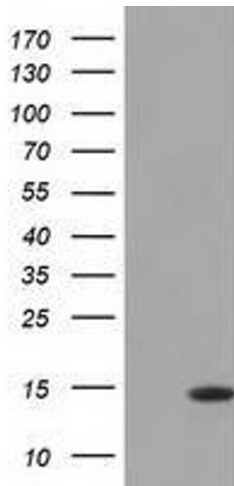
Flow Cytometry

Image 1. Flow Cytometric analysis of Jurkat cells using CISD1 antibody (Red), compared to a nonspecific negative control antibody (Blue).



Immunofluorescence

Image 2. Immunofluorescent staining of COS7 cells transiently transfected with recombinant Cisd1 protein using Cisd1 antibody



Western Blotting

Image 3. Western Blot analysis of HEK293T cell lysates (5 ug) transfected with either recombinant Cisd1 protein (Right) or empty vector (Left) detected with Cisd1 antibody