

Datasheet for ABIN932192

**anti-LSM10 antibody****2** Images[Go to Product page](#)

## Overview

Quantity:	100 µg
Target:	LSM10
Reactivity:	Human
Host:	Mouse
Clonality:	Monoclonal
Conjugate:	This LSM10 antibody is un-conjugated
Application:	Dot Blot (DB), Immunocytochemistry (ICC)

## Product Details

Immunogen:	LSM10 antibody was raised in mouse using recombinant Human Lsm10, U7 Small Nuclear Rna Associated (Lsm10)
Clone:	2522C1a
Isotype:	IgG2a
Cross-Reactivity:	Human
Cross-Reactivity (Details):	Other species not studied.
Purification:	Protein G affinity chromatography

## Target Details

Target:	LSM10
Alternative Name:	LSM10 ( <a href="#">LSM10 Products</a> )

## Target Details

**Background:** The protein encoded by the LSM10 gene binds specifically to U7 snRNA. Synonyms: Monoclonal LSM10 antibody, Anti-LSM10 antibody, U7 snRNA-associated Sm-like protein LSM10 antibody, MST074 antibody, MSTP074 antibody, MGC15749 antibody.

## Application Details

**Application Notes:** ICC: 2-100 µg/mL  
Optimal conditions should be determined by the investigator.

**Restrictions:** For Research Use only

## Handling

**Concentration:** Lot specific

**Buffer:** LSM10 antibody in PBS (3.0 mM KCl, 1.5 mM KH<sub>2</sub> PO<sub>4</sub>, 140 mM NaCl, 8.0 mM Na<sub>2</sub> HPO<sub>4</sub> (pH 7.4)) containing 1 % bovine serum albumin (BSA) and 0.05 % sodium azide (NaN<sub>3</sub>).

**Preservative:** Sodium azide

**Precaution of Use:** This product contains Sodium Azide: a POISONOUS AND HAZARDOUS SUBSTANCE, which should be handled by trained staff only.

**Handling Advice:** Avoid repeated freeze/thaw cycles.  
Dilute only prior to immediate use.

**Storage:** 4 °C/-20 °C

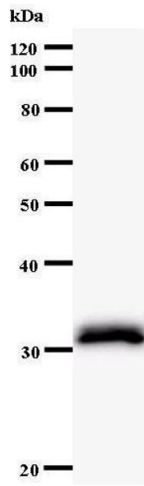
**Storage Comment:** Store at 2-8 °C for up to one year. We recommend long term storage at -20 °C.

## Images



### Immunofluorescence

**Image 1.** Immunostaining analysis in HeLa cells. HeLa cells were fixed with 4% paraformaldehyde and permeabilized with 0.01% Triton-X100 in PBS. The cells were immunostained with anti-LSM10 antibody.



## Western Blotting

Image 2.