

Datasheet for ABIN932198
anti-LMAN2 antibody



[Go to Product page](#)

1 Image

Overview

Quantity:	100 µg
Target:	LMAN2
Reactivity:	Human
Host:	Mouse
Clonality:	Monoclonal
Conjugate:	This LMAN2 antibody is un-conjugated
Application:	Dot Blot (DB)

Product Details

Immunogen:	LMAN2 antibody was raised in mouse using recombinant Human Lectin, Mannose-Binding 2 (Lman2)
Clone:	264C4a
Isotype:	IgG2a
Cross-Reactivity:	Human
Cross-Reactivity (Details):	Other species not studied.
Purification:	Protein G affinity chromatography

Target Details

Target:	LMAN2
Alternative Name:	LMAN2 (LMAN2 Products)

Target Details

Background: This gene encodes a type I transmembrane lectin that shuttles between the endoplasmic reticulum, the Golgi apparatus and the plasma membrane. The encoded protein binds high mannose type glycoproteins and may facilitate their sorting, trafficking and quality control.
Synonyms: Monoclonal LMAN2 antibody, Anti-LMAN2 antibody, lectin and mannose binding 2 antibody, GP36B antibody, VIP36 antibody, C5orf8 antibody.

Pathways: [SARS-CoV-2 Protein Interactome](#)

Application Details

Application Notes: Optimal conditions should be determined by the investigator.

Restrictions: For Research Use only

Handling

Concentration: Lot specific

Buffer: LMAN2 antibody in PBS (3.0 mM KCl, 1.5 mM KH₂ PO₄, 140 mM NaCl, 8.0 mM Na₂ HPO₄ (pH 7.4)) containing 1 % bovine serum albumin (BSA) and 0.05 % sodium azide (NaN₃).

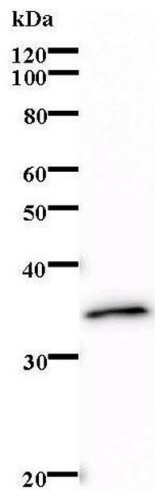
Preservative: Sodium azide

Precaution of Use: This product contains Sodium Azide: a POISONOUS AND HAZARDOUS SUBSTANCE, which should be handled by trained staff only.

Handling Advice: Avoid repeated freeze/thaw cycles.
Dilute only prior to immediate use.

Storage: 4 °C/-20 °C

Storage Comment: Store at 2-8 °C for up to one year. We recommend long term storage at -20 °C.



Western Blotting

Image 1.