

Datasheet for ABIN932216 **anti-LRRFIP2 antibody**



[Go to Product page](#)

1 Image

Overview

Quantity:	100 µg
Target:	LRRFIP2
Reactivity:	Human
Host:	Mouse
Clonality:	Monoclonal
Conjugate:	This LRRFIP2 antibody is un-conjugated
Application:	Immunocytochemistry (ICC), Dot Blot (DB)

Product Details

Immunogen:	LRRFIP2 antibody was raised in mouse using recombinant Human Leucine Rich Repeat (In Flii) Interacting Protein 2
Clone:	377C3a
Isotype:	IgG2a
Cross-Reactivity:	Human
Cross-Reactivity (Details):	Other species not studied.
Purification:	Protein G affinity chromatography

Target Details

Target:	LRRFIP2
Alternative Name:	LRRFIP2 (LRRFIP2 Products)

Target Details

Background: This gene may function as activator of the canonical Wnt signaling pathway, in association with DVL3, upstream of CTNNB1/beta-catenin. Synonyms: Monoclonal LRRFIP2 antibody, Anti-LRRFIP2 antibody, Leucine rich repeat (in FLII) interacting protein 2 antibody, FLJ20248 antibody.

Application Details

Application Notes: Optimal conditions should be determined by the investigator.

Restrictions: For Research Use only

Handling

Concentration: Lot specific

Buffer: LRRFIP2 antibody in PBS (3.0 mM KCl, 1.5 mM KH₂ PO₄, 140 mM NaCl, 8.0 mM Na₂ HPO₄ (pH 7.4)) containing 1 % bovine serum albumin (BSA) and 0.05 % sodium azide (NaN₃).

Preservative: Sodium azide

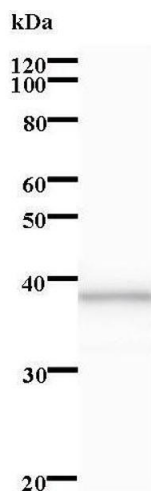
Precaution of Use: This product contains Sodium Azide: a POISONOUS AND HAZARDOUS SUBSTANCE, which should be handled by trained staff only.

Handling Advice: Avoid repeated freeze/thaw cycles.
Dilute only prior to immediate use.

Storage: 4 °C/-20 °C

Storage Comment: Store at 2-8 °C for up to one year. We recommend long term storage at -20 °C.

Images



Western Blotting

Image 1.