

Datasheet for ABIN932239
anti-Laminin antibody (AA 31-270)



[Go to Product page](#)

2 Images

Overview

Quantity:	100 µL
Target:	Laminin (LN)
Binding Specificity:	AA 31-270
Reactivity:	Human
Host:	Mouse
Clonality:	Monoclonal
Conjugate:	This Laminin antibody is un-conjugated
Application:	Western Blotting (WB), ELISA

Product Details

Immunogen:	Laminin antibody was raised in Mouse using a purified recombinant fragment of Laminin(aa31-270) expressed in E. coli as the immunogen.
Clone:	2D9G5
Isotype:	IgG2a

Target Details

Target:	Laminin (LN)
Alternative Name:	Laminin (LN Products)
Background:	Laminins are major proteins in the basal lamina, a protein network foundation for most cells and organs. The laminins are an important and biologically active part of the basal lamina, influencing cell differentiation, migration, adhesion as well as phenotype and survival.

Target Details

Synonyms: Monoclonal Laminin antibody, Anti-Laminin antibody, LAMA1 antibody, LAMB1 antibody, Laminin A chain antibody, Laminin alpha 1 antibody, Laminin alpha 1 chain antibody, Laminin B1 chain antibody, Laminin subunit beta 1 antibody.

Application Details

Application Notes: ELISA: 1:10,000, WB: 1:500-1:2000
Optimal conditions should be determined by the investigator.

Restrictions: For Research Use only

Handling

Format: Liquid

Concentration: Lot specific

Buffer: Supplied as a liquid in ascitic fluid containing 0.03 % sodium azide.

Preservative: Sodium azide

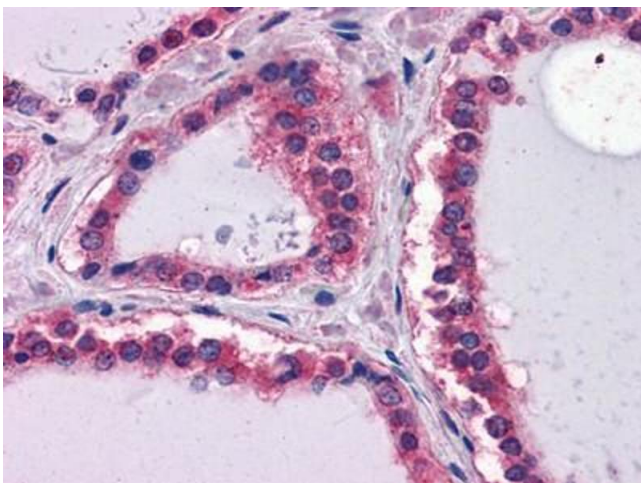
Precaution of Use: This product contains Sodium Azide: a POISONOUS AND HAZARDOUS SUBSTANCE, which should be handled by trained staff only.

Handling Advice: Avoid repeated freeze/thaw cycles.
Dilute only prior to immediate use.

Storage: 4 °C/-20 °C

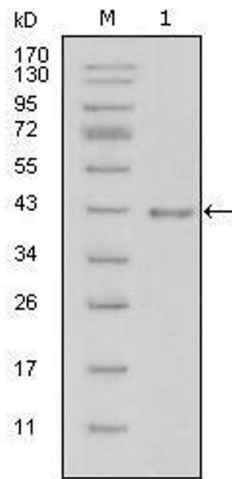
Storage Comment: Store at 4 °C for short term storage. Store at -20 °C for long term storage.

Images



Immunohistochemistry

Image 1. Immunohistochemical analysis of paraffin-embedded human Thyroid tissues using LAMB1 antibody



Western Blotting

Image 2. Western Blot showing LAMB1 antibody used against truncated LAMB1-His recombinant protein (1).