

Datasheet for ABIN932477

**anti-NSD1 antibody**[Go to Product page](#)**1** Image

## Overview

Quantity:	100 µg
Target:	NSD1
Reactivity:	Human
Host:	Mouse
Clonality:	Monoclonal
Conjugate:	This NSD1 antibody is un-conjugated
Application:	Dot Blot (DB)

## Product Details

Immunogen:	NSD1 antibody was raised in mouse using recombinant Human Nuclear Receptor Binding Set Domain Protein 1 (Nsd1)
Clone:	2658C1a
Isotype:	IgG2b
Cross-Reactivity:	Human
Cross-Reactivity (Details):	Other species not studied.
Purification:	Protein G affinity chromatography

## Target Details

Target:	NSD1
Alternative Name:	NSD1 ( <a href="#">NSD1 Products</a> )

## Target Details

---

**Background:** This gene encodes a protein containing a SET domain, 2 LXXLL motifs, 3 nuclear translocation signals (NLSs), 4 plant homeodomain (PHD) finger regions, and a proline-rich region. The encoded protein enhances androgen receptor (AR) transactivation, and this enhancement can be increased further in the presence of other androgen receptor associated coregulators. This protein may act as a nucleus-localized, basic transcriptional factor and also as a bifunctional transcriptional regulator. Mutations of this gene have been associated with Sotos syndrome and Weaver syndrome. One version of childhood acute myeloid leukemia is the result of a cryptic translocation with the breakpoints occurring within nuclear receptor-binding Su-var, enhancer of zeste, and trithorax domain protein 1 on chromosome 5 and nucleoporin, 98 kDa on chromosome 11. Two transcript variants encoding distinct isoforms have been identified for this gene. Synonyms: Monoclonal NSD1 antibody, Anti-NSD1 antibody, Nuclear receptor binding SET domain protein 1 antibody, STO antibody, KMT3B antibody, SOTOS antibody, ARA267 antibody, FLJ22263 antibody, FLJ44628 antibody, DKFZp666C163 antibody.

## Application Details

---

**Application Notes:** Optimal conditions should be determined by the investigator.

**Restrictions:** For Research Use only

## Handling

---

**Concentration:** Lot specific

**Buffer:** NSD1 antibody in PBS (3.0 mM KCl, 1.5 mM KH<sub>2</sub> PO<sub>4</sub>, 140 mM NaCl, 8.0 mM Na<sub>2</sub> HPO<sub>4</sub> (pH 7.4)) containing 1 % bovine serum albumin (BSA) and 0.05 % sodium azide (NaN<sub>3</sub>).

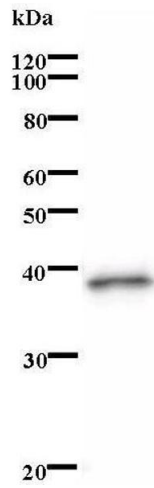
**Preservative:** Sodium azide

**Precaution of Use:** This product contains Sodium Azide: a POISONOUS AND HAZARDOUS SUBSTANCE, which should be handled by trained staff only.

**Handling Advice:** Avoid repeated freeze/thaw cycles.  
Dilute only prior to immediate use.

**Storage:** 4 °C/-20 °C

**Storage Comment:** Store at 2-8 °C for up to one year. We recommend long term storage at -20 °C.



**Western Blotting**

**Image 1.**