

Datasheet for ABIN932481

anti-ISL2 antibody**2** Images[Go to Product page](#)

Overview

Quantity:	100 µg
Target:	ISL2
Reactivity:	Human
Host:	Mouse
Clonality:	Monoclonal
Conjugate:	This ISL2 antibody is un-conjugated
Application:	Immunocytochemistry (ICC), Dot Blot (DB)

Product Details

Immunogen:	ISL2 antibody was raised in mouse using recombinant Human Isl Lim Homeobox 2
Clone:	203C5a
Isotype:	IgG2b
Cross-Reactivity:	Human
Cross-Reactivity (Details):	Other species not studied.
Purification:	Protein G affinity chromatography

Target Details

Target:	ISL2
Alternative Name:	ISL2 (ISL2 Products)
Background:	Transcriptional factor that defines subclasses of motoneurons that segregate into columns in

Target Details

the spinal cord and select distinct axon pathways By similarity. Synonyms: Monoclonal ISL2 antibody, Anti-ISL2 antibody, ISL2 transcription factor antibody.

Application Details

Application Notes: ICC: 2-100 µg/mL
Optimal conditions should be determined by the investigator.

Restrictions: For Research Use only

Handling

Concentration: Lot specific

Buffer: ISL2 antibody in PBS (3.0 mM KCl, 1.5 mM KH₂ PO₄, 140 mM NaCl, 8.0 mM Na₂ HPO₄ (pH 7.4)) containing 1 % bovine serum albumin (BSA) and 0.05 % sodium azide (NaN₃).

Preservative: Sodium azide

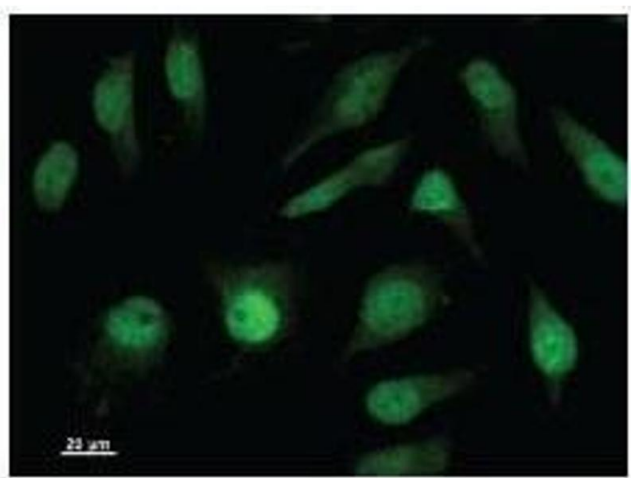
Precaution of Use: This product contains Sodium Azide: a POISONOUS AND HAZARDOUS SUBSTANCE, which should be handled by trained staff only.

Handling Advice: Avoid repeated freeze/thaw cycles.
Dilute only prior to immediate use.

Storage: 4 °C/-20 °C

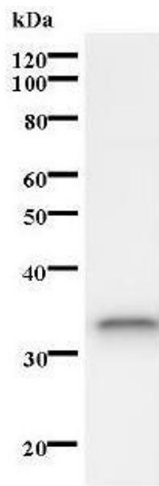
Storage Comment: Store at 2-8 °C for up to one year. We recommend long term storage at -20 °C.

Images



Immunofluorescence

Image 1. Immunostaining analysis in HeLa cells. HeLa cells were fixed with 4% paraformaldehyde and permeabilized with 0.01% Triton-X100 in PBS. The cells were immunostained with anti-ISL2 antibody.



Western Blotting

Image 2.