

Datasheet for ABIN932484

anti-IFI35 antibody[Go to Product page](#)**1** Image

Overview

Quantity:	100 µg
Target:	IFI35
Reactivity:	Human
Host:	Mouse
Clonality:	Monoclonal
Application:	Dot Blot (DB)

Product Details

Immunogen:	IFI35 antibody was raised in mouse using recombinant Human Interferon-Induced Protein 35 (Ifi35)
Clone:	2461C3a
Isotype:	IgG2b
Cross-Reactivity:	Human
Cross-Reactivity (Details):	Other species not studied.
Purification:	Protein G affinity chromatography

Target Details

Target:	IFI35
Alternative Name:	IFI35 (IFI35 Products)
Background:	The function of this gene has not been determined. Synonyms: Monoclonal IFI35 antibody, Anti-

Target Details

IFI35 antibody, Interferon induced 35 kDa protein antibody, IFP35 antibody, FLJ21753 antibody.

Application Details

Application Notes: Optimal conditions should be determined by the investigator.

Restrictions: For Research Use only

Handling

Concentration: Lot specific

Buffer: IFI35 antibody in PBS (3.0 mM KCl, 1.5 mM KH₂ PO₄, 140 mM NaCl, 8.0 mM Na₂ HPO₄ (pH 7.4)) containing 1 % bovine serum albumin (BSA) and 0.05 % sodium azide (NaN₃).

Preservative: Sodium azide

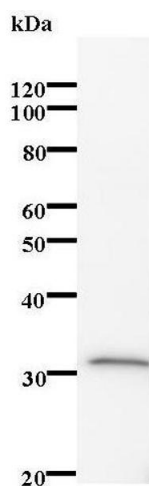
Precaution of Use: This product contains Sodium Azide: a POISONOUS AND HAZARDOUS SUBSTANCE, which should be handled by trained staff only.

Handling Advice: Avoid repeated freeze/thaw cycles.
Dilute only prior to immediate use.

Storage: 4 °C/-20 °C

Storage Comment: Store at 2-8 °C for up to one year. We recommend long term storage at -20 °C.

Images



Western Blotting

Image 1.