

Datasheet for ABIN932749
anti-ZBTB7B antibody



[Go to Product page](#)

3 Images

Overview

Quantity:	100 µL
Target:	ZBTB7B
Reactivity:	Human
Host:	Mouse
Clonality:	Monoclonal
Conjugate:	This ZBTB7B antibody is un-conjugated
Application:	Western Blotting (WB), ELISA, Immunofluorescence (IF)

Product Details

Immunogen:	ZBTB7B antibody was raised in Mouse using a purified recombinant fragment of human ZBTB7B expressed in E. coli as the immunogen.
Clone:	7C12
Isotype:	IgG1

Target Details

Target:	ZBTB7B
Alternative Name:	ZBTB7B (ZBTB7B Products)

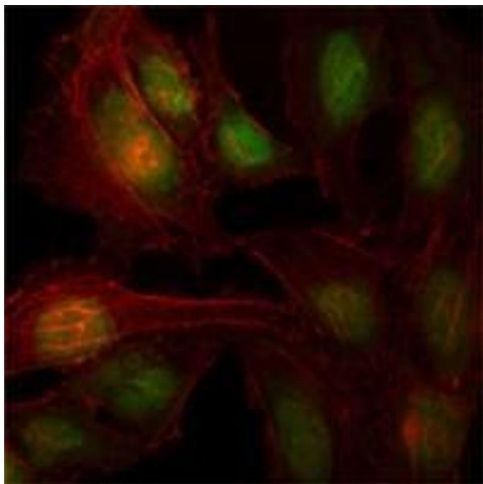
Application Details

Application Notes:	ELISA: 1:10,000, IF: 1:200-1:1000, WB: 1:500-1:2000
Restrictions:	For Research Use only

Handling

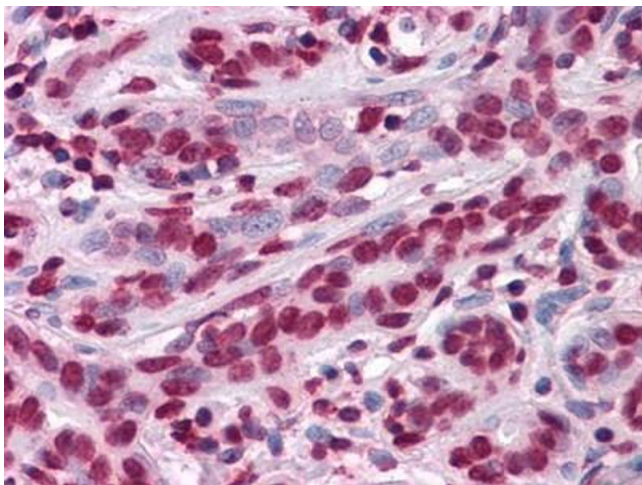
Format:	Liquid
Concentration:	Lot specific
Buffer:	as a liquid In ascitic fluid containing 0.03 % sodium azide.
Preservative:	Sodium azide
Precaution of Use:	This product contains Sodium azide: a POISONOUS AND HAZARDOUS SUBSTANCE which should be handled by trained staff only.
Handling Advice:	Avoid repeated freeze/thaw cycles
Storage:	-20 °C
Storage Comment:	Store at 4 °C for short term storage. Store at -20 °C for long term storage.

Images



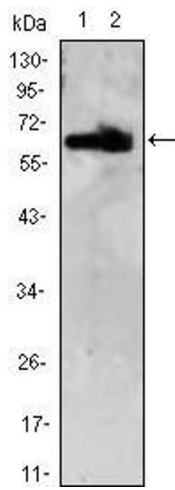
Immunofluorescence

Image 1. Immunofluorescence analysis of HeLa cells using ZBTB7B antibody (green). Red: Actin filaments have been labeled with Alexa Fluor-555 phalloidin



Immunohistochemistry

Image 2. Immunohistochemical analysis of paraffin-embedded human Breast tissues using anti-ZBTB7B antibody



Western Blotting

Image 3. Western Blot showing ZBTB7B antibody used against HEK293 (1,2) cell lysate.