

Datasheet for ABIN932997  
**anti-RFXAP antibody**



[Go to Product page](#)

1 Image

## Overview

|              |   |
|--------------|---|
| Quantity:    | 100 µg                                      |
| Target:      | RFXAP                                       |
| Reactivity:  | Human                                       |
| Host:        | Mouse                                       |
| Clonality:   | Monoclonal                                  |
| Conjugate:   | This RFXAP antibody is un-conjugated        |
| Application: | Western Blotting (WB), ELISA, Dot Blot (DB) |

## Product Details

|                             |   |
|-----------------------------|---|
| Immunogen:                  | RFXAP antibody was raised in mouse using recombinant Regulatory Factor X-Associated Protein (Rfxap) |
| Clone:                      | RFXAD55A  |
| Isotype:                    | IgG1  |
| Cross-Reactivity:           | Human, Mouse (Murine)   |
| Cross-Reactivity (Details): | Other species not studied.  |
| Purification:               | Protein G affinity chromatography   |

## Target Details

|                   |  |
|-------------------|--|
| Target:           | RFXAP                                    |
| Alternative Name: | RFXAP ( <a href="#">RFXAP Products</a> ) |

## Target Details

---

**Background:** Major histocompatibility (MHC) class II molecules are transmembrane proteins that have a central role in development and control of the immune system. The protein encoded by this gene, along with regulatory factor X-associated ankyrincontaining protein and regulatory factor-5, forms a complex that binds to the X box motif of certain MHC class II gene promoters and activates their transcription. Once bound to the promoter, this complex associates with the non-DNA-binding factor MHC class II transactivator, which controls the cell type specificity and inducibility of MHC class II gene expression. Mutations in this gene have been linked to bare lymphocyte syndrome type II, complementation group D. Transcript variants utilizing different polyA signals have been found for this gene. Synonyms: Monoclonal RFXAP antibody, Anti-RFXAP antibody, Regulatory factor X-associated protein antibody.

## Application Details

---

**Application Notes:** WB: 0.2-2 µg/mL  
Optimal conditions should be determined by the investigator.

**Restrictions:** For Research Use only

## Handling

---

**Concentration:** Lot specific

**Buffer:** RFXAP antibody in PBS (3.0 mM KCl, 1.5 mM KH<sub>2</sub> PO<sub>4</sub>, 140 mM NaCl, 8.0 mM Na<sub>2</sub> PO<sub>4</sub> (pH 7.4)) containing 1 % bovine serum albumin (BSA) and 0.05 % sodium azide (NaN<sub>3</sub>).

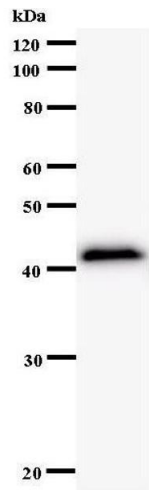
**Preservative:** Sodium azide

**Precaution of Use:** This product contains Sodium Azide: a POISONOUS AND HAZARDOUS SUBSTANCE, which should be handled by trained staff only.

**Handling Advice:** Avoid repeated freeze/thaw cycles.  
Dilute only prior to immediate use.

**Storage:** 4 °C/-20 °C

**Storage Comment:** Store at 2-8 °C for up to one year. We recommend long term storage at -20 °C.



### Western Blotting

Image 1.