

Datasheet for ABIN933002

anti-BRPF1 antibody**2** Images[Go to Product page](#)

Overview

| | |
|--------------|---|
| Quantity: | 100 µg |
| Target: | BRPF1 |
| Reactivity: | Human |
| Host: | Mouse |
| Clonality: | Monoclonal |
| Conjugate: | This BRPF1 antibody is un-conjugated |
| Application: | Western Blotting (WB), Flow Cytometry (FACS), Immunoprecipitation (IP), Dot Blot (DB) |

Product Details

| | |
|-----------------------------|---|
| Immunogen: | BRPF1 antibody was raised in mouse using recombinant Human Bromodomain And Phd Finger Containing, 1 (Brpf1) |
| Clone: | 2093C5a |
| Isotype: | IgG1 |
| Cross-Reactivity: | Human, Mouse (Murine) |
| Cross-Reactivity (Details): | Other species not studied. |
| Purification: | Protein G affinity chromatography |

Target Details

| | |
|-------------------|--|
| Target: | BRPF1 |
| Alternative Name: | BRPF1 (BRPF1 Products) |

Target Details

Background: The protein encoded by this gene is expressed ubiquitously and at the highest level in testes and spermatogonia. The protein is localized within nuclei, and it is very similar in structure to two zinc finger proteins, AF10 and AF17. It is suggested that these proteins form a family of regulatory proteins. Two alternatively spliced transcript variants encoding different isoforms have been found for this gene. Synonyms: Monoclonal BRPF1 antibody, Anti-BRPF1 antibody, Bromodomain and PHD finger containing protein antibody, BR140 antibody.

Application Details

Application Notes: WB: 0.2-2 µg/mL, IP: 100-500 µg/sample, FC: 0.5-2 µg/sample
Optimal conditions should be determined by the investigator.

Restrictions: For Research Use only

Handling

Concentration: Lot specific

Buffer: BRPF1 antibody in PBS (3.0 mM KCl, 1.5 mM KH₂ PO₄, 140 mM NaCl, 8.0 mM Na₂ HPO₄ (pH 7.4)) containing 1 % bovine serum albumin (BSA) and 0.05 % sodium azide (NaN₃).

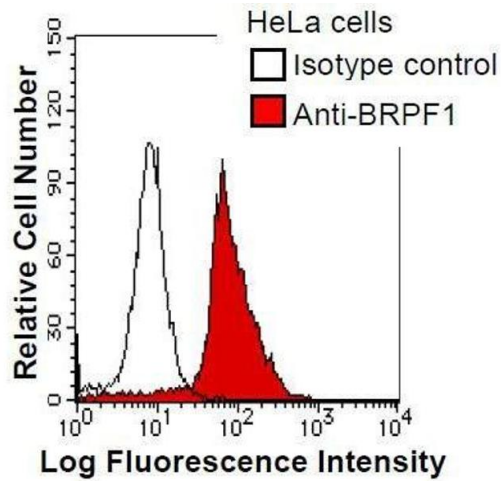
Preservative: Sodium azide

Precaution of Use: This product contains Sodium Azide: a POISONOUS AND HAZARDOUS SUBSTANCE, which should be handled by trained staff only.

Handling Advice: Avoid repeated freeze/thaw cycles.
Dilute only prior to immediate use.

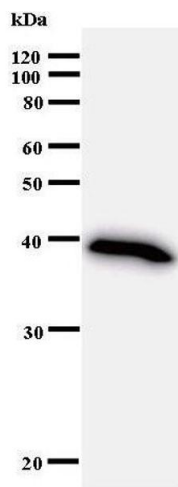
Storage: 4 °C/-20 °C

Storage Comment: Store at 2-8 °C for up to one year. We recommend long term storage at -20 °C.



Flow Cytometry

Image 1. HeLa cells were fixed in 2% paraformaldehyde/PBS and then permeabilized in 90% methanol. Cells were stained with anti-BRPF1 mAb (shaded) or isotype control (unshaded) followed by Alexa Fluor 488 conjugated goat anti-mouse IgG.



Western Blotting

Image 2.