

Datasheet for ABIN933004

anti-DDX27 antibody**3** Images[Go to Product page](#)

Overview

Quantity:	100 µg
Target:	DDX27
Reactivity:	Human
Host:	Mouse
Clonality:	Monoclonal
Conjugate:	This DDX27 antibody is un-conjugated
Application:	Western Blotting (WB), Flow Cytometry (FACS), Dot Blot (DB), Immunocytochemistry (ICC)

Product Details

Immunogen:	DDX27 antibody was raised in mouse using recombinant Human Dead (Asp-Glu-Ala-Asp) Box Polypeptide 27 (Ddx27)
Clone:	2251C2a
Isotype:	IgG1
Cross-Reactivity:	Human, Mouse (Murine)
Cross-Reactivity (Details):	Other species not studied.
Purification:	Protein G affinity chromatography

Target Details

Target:	DDX27
Alternative Name:	DDX27 (DDX27 Products)

Target Details

Background: DEAD box proteins, characterized by the conserved motif Asp-Glu-Ala-Asp (DEAD), are putative RNA helicases. They are implicated in a number of cellular processes involving alteration of RNA secondary structure such as translation initiation, nuclear and mitochondrial splicing, and ribosome and spliceosome assembly. Based on their distribution patterns, some members of this family are believed to be involved in embryogenesis, spermatogenesis, and cellular growth and division. This gene encodes a DEAD box protein, the function of which has not been determined. Synonyms: Monoclonal DDX27 antibody, Anti-DDX27 antibody, DEAD (Asp-Glu-Ala-Asp) box polypeptide 27 antibody, RHLP antibody, Rrp3p antibody, PP3241 antibody, HSPC259 antibody, MGC1018 antibody, FLJ12917 antibody, FLJ20596 antibody, FLJ22238 antibody, dJ686N3.1 antibody, DKFZp667N057 antibody.

Application Details

Application Notes: WB: 0.2-2 µg/mL, FC: 0.5-2 µg/sample, ICC: 2-100 µg/mL
Optimal conditions should be determined by the investigator.

Restrictions: For Research Use only

Handling

Concentration: Lot specific

Buffer: DDX27 antibody in PBS (3.0 mM KCl, 1.5 mM KH₂ PO₄, 140 mM NaCl, 8.0 mM Na₂ HPO₄ (pH 7.4)) containing 1 % bovine serum albumin (BSA) and 0.05 % sodium azide (NaN₃).

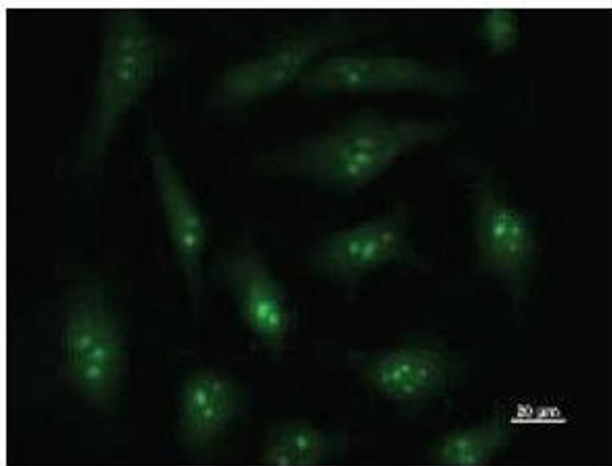
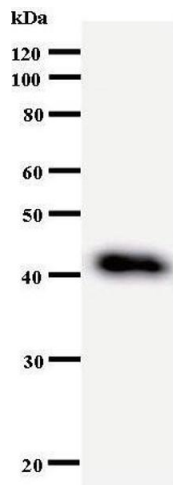
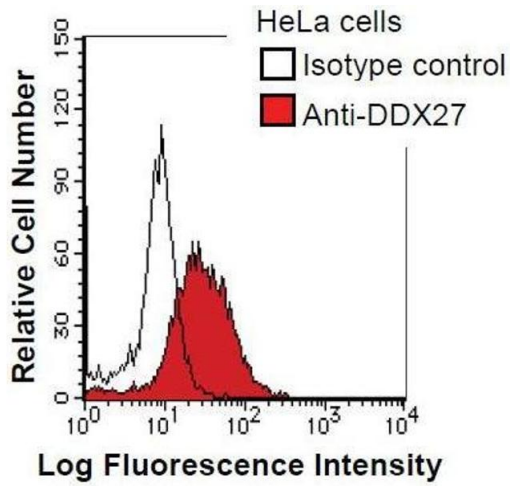
Preservative: Sodium azide

Precaution of Use: This product contains Sodium Azide: a POISONOUS AND HAZARDOUS SUBSTANCE, which should be handled by trained staff only.

Handling Advice: Avoid repeated freeze/thaw cycles.
Dilute only prior to immediate use.

Storage: 4 °C/-20 °C

Storage Comment: Store at 2-8 °C for up to one year. We recommend long term storage at -20 °C.



Flow Cytometry

Image 1. HeLa cells were fixed in 2% paraformaldehyde/PBS and then permeabilized in 90% methanol. Cells were stained with anti-DDX27 antibody (shaded) or isotype control (unshaded) followed by Alexa Fluor 488 conjugated goat anti-mouse IgG.

Western Blotting

Image 2.

Immunofluorescence

Image 3. Immunostaining analysis in HeLa cells. HeLa cells were fixed with 4% paraformaldehyde and permeabilized with 0.01% Triton-X100 in PBS. The cells were immunostained with anti-DDX27 antibody.