

Datasheet for ABIN933017 **anti-PPP1CA antibody**



[Go to Product page](#)

1 Image

Overview

Quantity:	100 µL
Target:	PPP1CA
Reactivity:	Human
Host:	Mouse
Clonality:	Monoclonal
Conjugate:	This PPP1CA antibody is un-conjugated
Application:	Western Blotting (WB), ELISA, Immunofluorescence (IF)

Product Details

Immunogen:	PPP1A antibody was raised in Mouse using a purified recombinant fragment of human PPP1A expressed in E. coli as the immunogen.
Clone:	6D1
Isotype:	IgG1

Target Details

Target:	PPP1CA
Alternative Name:	PPP1A (PPP1CA Products)
Pathways:	M Phase , Cellular Glucan Metabolic Process , Regulation of Carbohydrate Metabolic Process , Lipid Metabolism

Application Details

Application Notes: ELISA: 1:10,000, IF: 1:200-1:1000, WB: 1:500-1:2000

Restrictions: For Research Use only

Handling

Format: Liquid

Concentration: Lot specific

Buffer: as a liquid In ascitic fluid containing 0.03 % sodium azide.

Preservative: Sodium azide

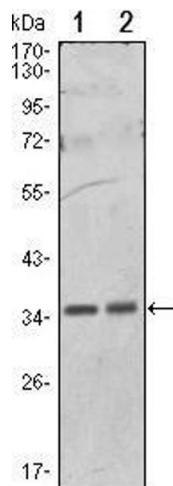
Precaution of Use: This product contains Sodium azide: a POISONOUS AND HAZARDOUS SUBSTANCE which should be handled by trained staff only.

Handling Advice: Avoid repeated freeze/thaw cycles

Storage: -20 °C

Storage Comment: Store at 4 °C for short term storage. Store at -20 °C for long term storage.

Images



Western Blotting

Image 1. Western Blot showing PPP1A antibody used against Hela (1) and NIH/3T3 (2) cell lysate.