

Datasheet for ABIN933037
anti-PSMD11 antibody (AA 1-422)



[Go to Product page](#)

1 Image

Overview

Quantity:	100 µL
Target:	PSMD11
Binding Specificity:	AA 1-422
Reactivity:	Human
Host:	Mouse
Clonality:	Monoclonal
Conjugate:	This PSMD11 antibody is un-conjugated
Application:	Western Blotting (WB), ELISA

Product Details

Immunogen:	PSMD11 antibody was raised in mouse using recombinant human PSMD11 (1-422aa) purified from E. coli as the immunogen.
Clone:	AT1F4
Isotype:	IgG1 kappa
Purification:	PSMD11 antibody was purified by protein-G affinity chromatography

Target Details

Target:	PSMD11
Alternative Name:	PSMD11 (PSMD11 Products)
Pathways:	Mitotic G1-G1/S Phases , DNA Replication , Synthesis of DNA , Ubiquitin Proteasome Pathway

Application Details

Application Notes: WB: 1:3000

Restrictions: For Research Use only

Handling

Format: Liquid

Concentration: Lot specific

Buffer: as a liquid PBS, pH 7.4, with 0.1 % NaN₃.

Preservative: Sodium azide

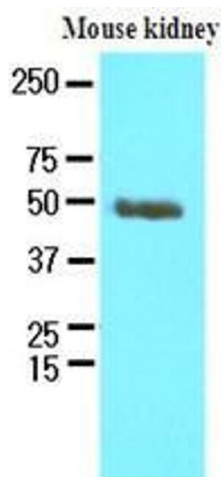
Precaution of Use: This product contains Sodium azide: a POISONOUS AND HAZARDOUS SUBSTANCE which should be handled by trained staff only.

Handling Advice: Avoid repeated freeze/thaw cycles

Storage: -20 °C

Storage Comment: Store at 4 °C for short term storage. Aliquot and store at -20 °C for long term storage.

Images



Western Blotting

Image 1. The extracts of mouse kidney (60 ug) were resolved by SDS-PAGE, transferred to nitrocellulose membrane and probed with anti-human PSMD11 (1:250). Proteins were visualized using a goat anti-mouse secondary antibody conjugated to HRP and an ECL detection system